



[Go to Product page](#)

Datasheet for ABIN2752810

HIST1H4H Protein (AA 31-103) (GST tag)

1 Image

Overview

Quantity:	2 µg
Target:	HIST1H4H
Protein Characteristics:	AA 31-103
Origin:	Human
Source:	Wheat germ
Protein Type:	Recombinant
Purification tag / Conjugate:	This HIST1H4H protein is labelled with GST tag.
Application:	Affinity Purification (AP), Antibody Array (AA), ELISA, Western Blotting (WB)

Product Details

Purpose:	HIST1H4H (Human) Recombinant Protein (Q01)
Sequence:	TKPAIRRLAR RGGVKRISGL IYEETRGVLK VFLENVIRDA VTYTEHAKRK TVTAMDVVYA LKRQGRTLYG FGG
Characteristics:	Human HIST1H4H partial ORF (NP_003534, 31 a.a. - 103 a.a.) recombinant protein with GST-tag at N-terminal.
Purification:	in vitro wheat germ expression system

Target Details

Target:	HIST1H4H
Alternative Name:	HIST1H4H (HIST1H4H Products)

Target Details

Background: Gene: histone cluster 1, H4h
Synonyms: H4/h, H4FH

Gene ID: 8365

NCBI Accession: [NM_003543](#)

Pathways: [Telomere Maintenance](#)

Application Details

Application Notes: Optimal working dilution should be determined by the investigator.

Restrictions: For Research Use only

Handling

Buffer: 50 mM Tris-HCl, 10 mM reduced Glutathione, pH =8.0 in the elution buffer.

Handling Advice: Aliquot to avoid repeated freezing and thawing.

Storage: -80 °C

Storage Comment: Best use within three months from the date of receipt of this protein.

Images

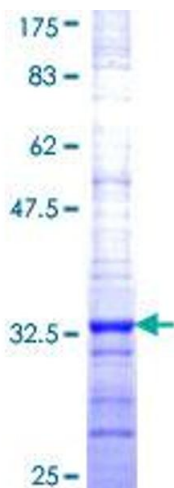


Image 1.