



[Go to Product page](#)

Datasheet for ABIN2752826

## IL-21 Protein (AA 63-162) (GST tag)

### 1 Image

#### Overview

Quantity:	2 µg
Target:	IL-21 (IL21)
Protein Characteristics:	AA 63-162
Origin:	Human
Source:	Wheat germ
Protein Type:	Recombinant
Purification tag / Conjugate:	This IL-21 protein is labelled with GST tag.
Application:	Western Blotting (WB), ELISA, Affinity Purification (AP), Antibody Array (AA)

#### Product Details

Purpose:	IL21 (Human) Recombinant Protein (Q01)
Sequence:	APEDVETNCE WSAFSCFQKA QLKSANTGNN ERIINVSICK LKRKPPSTNA GRRQKHRLTC PSCDSYEKKP PKEFLERFKS LLQKMIHQHL SSRTHGSEDS
Characteristics:	Human IL21 partial ORF ( NM_021803, 63 a.a. - 162 a.a.) recombinant protein with GST-tag at N-terminal.
Purification:	in vitro wheat germ expression system

#### Target Details

Target:	IL-21 (IL21)
Alternative Name:	IL21 ( <a href="#">IL21 Products</a> )

## Target Details

Background:	Gene: interleukin 21 Synonyms: IL-21, Za11
Gene ID:	59067
NCBI Accession:	<a href="#">NM_021803</a>
Pathways:	<a href="#">JAK-STAT Signaling</a> , <a href="#">Regulation of Leukocyte Mediated Immunity</a> , <a href="#">Positive Regulation of Immune Effector Process</a> , <a href="#">Production of Molecular Mediator of Immune Response</a>

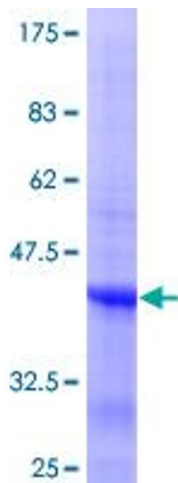
## Application Details

Application Notes:	Optimal working dilution should be determined by the investigator.
Restrictions:	For Research Use only

## Handling

Buffer:	50 mM Tris-HCl, 10 mM reduced Glutathione, pH =8.0 in the elution buffer.
Handling Advice:	Aliquot to avoid repeated freezing and thawing.
Storage:	-80 °C
Storage Comment:	Best use within three months from the date of receipt of this protein.

## Images



**Image 1.**