



[Go to Product page](#)

Datasheet for ABIN2752840

## LEAP2 Protein (AA 1-77) (GST tag)

### 1 Image

#### Overview

Quantity:	25 µg
Target:	LEAP2
Protein Characteristics:	AA 1-77
Origin:	Human
Source:	Wheat germ
Protein Type:	Recombinant
Purification tag / Conjugate:	This LEAP2 protein is labelled with GST tag.
Application:	Western Blotting (WB), Antibody Array (AA), Affinity Purification (AP), ELISA

#### Product Details

Purpose:	LEAP2 (Human) Recombinant Protein (P02)
Sequence:	MWHLKLC AVL MIFLLLLGQI DGSP IPEVSS AKRRPRRMTP FWRGVSLRPI GASCRDDSEC ITRLCRKRRC SLSVAQE
Characteristics:	Human LEAP2 full-length ORF (NP_443203.1, 1 a.a. - 77 a.a.) recombinant protein with GST tag at N-terminal.
Purification:	in vitro wheat germ expression system

#### Target Details

Target:	LEAP2
Alternative Name:	LEAP2 ( <a href="#">LEAP2 Products</a> )

## Target Details

Background:	Full Gene Name: liver expressed antimicrobial peptide 2 Synonyms: LEAP-2
Gene ID:	116842
NCBI Accession:	<a href="#">NM_052971</a>

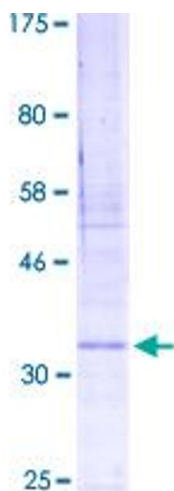
## Application Details

Application Notes:	Optimal working dilution should be determined by the investigator.
Comment:	Preparation method: in vitro, wheat germ expression system Product Quality tested by: 12.5% SDS-PAGE Stained with Coomassie Blue
Restrictions:	For Research Use only

## Handling

Buffer:	50 mM Tris-HCl, 10 mM reduced Glutathione, pH =8.0 in the elution buffer.
Handling Advice:	Aliquot to avoid repeated freezing and thawing.
Storage:	-80 °C
Storage Comment:	Best use within three months from the date of receipt of this protein.

## Images



**Image 1.**