

Datasheet for ABIN2773777

anti-SNAPC2 antibody (C-Term)[Go to Product page](#)**1** Image

Overview

Quantity:	100 µL
Target:	SNAPC2
Binding Specificity:	C-Term
Reactivity:	Human
Host:	Rabbit
Clonality:	Polyclonal
Conjugate:	This SNAPC2 antibody is un-conjugated
Application:	Western Blotting (WB)

Product Details

Immunogen:	The immunogen is a synthetic peptide directed towards the C-terminal region of Human SNAPC2
Sequence:	EEDFAVDFEK IYKYLSSVSR SGRSPELSAA ESAVVDLLM SLPEELPLL
Predicted Reactivity:	Human: 100%
Characteristics:	This is a rabbit polyclonal antibody against SNAPC2. It was validated on Western Blot.
Purification:	Affinity Purified

Target Details

Target:	SNAPC2
Alternative Name:	SNAPC2 (SNAPC2 Products)

Target Details

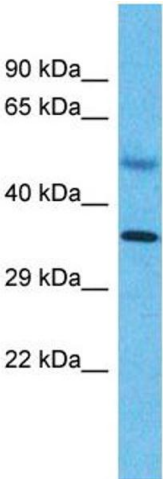
Background:	<p>SNAPC2 is a component of the snRNA activating protein complex (SNAPc). SNAPC2 is exceptionally proline-rich, interacts strongly with TBP, and, other SNAPC components, is required for both RNA polymerase II and III transcription of snRNA genes.</p> <p>Alias Symbols: PTFDELTA, SNAP45</p> <p>Protein Interaction Partner: TBP, SNAPC4, SNAPC3, SNAPC1,</p> <p>Protein Size: 334</p>
Molecular Weight:	35 kDa
Gene ID:	6618
NCBI Accession:	NM_003083 , NP_003074
UniProt:	Q13487
Pathways:	Chromatin Binding

Application Details

Application Notes:	Optimal working dilution should be determined by the investigator.
Restrictions:	For Research Use only

Handling

Format:	Liquid
Concentration:	1 mg/mL
Buffer:	Liquid. Purified antibody supplied in 1x PBS buffer with 0.09 % (w/v) sodium azide and 2 % sucrose.
Preservative:	Sodium azide
Precaution of Use:	This product contains Sodium azide: a POISONOUS AND HAZARDOUS SUBSTANCE which should be handled by trained staff only.
Handling Advice:	Avoid repeat freeze-thaw cycles.
Storage:	-20 °C
Storage Comment:	For short term use, store at 2-8°C up to 1 week. For long term storage, store at -20°C in small aliquots to prevent freeze-thaw cycles.



Western Blotting

Image 1. Host: Rabbit Target Name: SNAPC2 Sample Type: Liver Tumor lysates Antibody Dilution: 1.0ug/ml