

Datasheet for ABIN2773782
anti-PIWIL1 antibody (N-Term)[Go to Product page](#)

3 Images

2 Publications

Overview

Quantity:	100 µL
Target:	PIWIL1
Binding Specificity:	N-Term
Reactivity:	Human, Mouse, Rat, Dog, Rabbit, Cow, Horse, Guinea Pig, Zebrafish (Danio rerio)
Host:	Rabbit
Clonality:	Polyclonal
Conjugate:	This PIWIL1 antibody is un-conjugated
Application:	Western Blotting (WB), Immunohistochemistry (IHC)

Product Details

Immunogen:	The immunogen is a synthetic peptide directed towards the N terminal region of human PIWIL1
Sequence:	FQELSLAERG GRRRDFHDLG VNTRQNLDHV KESKTGSSGI IVRLSTNHFR
Predicted Reactivity:	Cow: 100%, Dog: 100%, Guinea Pig: 100%, Horse: 100%, Human: 100%, Mouse: 100%, Rabbit: 100%, Rat: 100%, Zebrafish: 77%
Characteristics:	This is a rabbit polyclonal antibody against PIWIL1. It was validated on Western Blot using a cell lysate as a positive control.
Purification:	Affinity Purified

Target Details

Target:	PIWIL1
---------	--------

Target Details

Alternative Name:	PIWIL1 (PIWIL1 Products)
Background:	<p>PIWIL1 is a member of the PIWI subfamily of Argonaute proteins, evolutionarily conserved proteins containing both PAZ and Piwi motifs that play important roles in stem cell self-renewal, RNA silencing, and translational regulation in diverse organisms. PI</p> <p>Alias Symbols: HIWI, PIWI, MIWI</p> <p>Protein Interaction Partner: UBC, DICER1, TP63, TP73, TP53,</p> <p>Protein Size: 861</p>
Molecular Weight:	98 kDa
Gene ID:	9271
NCBI Accession:	NM_004764 , NP_004755
UniProt:	Q96J94

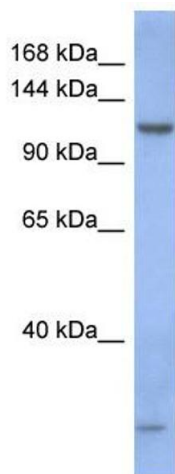
Application Details

Application Notes:	Optimal working dilutions should be determined experimentally by the investigator.
Comment:	Antigen size: 861 AA
Restrictions:	For Research Use only

Handling

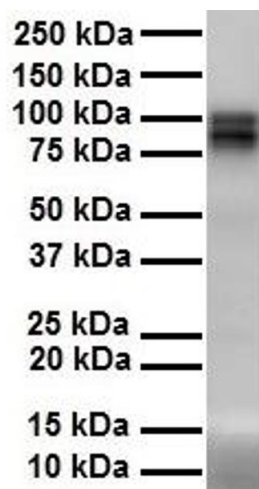
Format:	Liquid
Concentration:	Lot specific
Buffer:	Liquid. Purified antibody supplied in 1x PBS buffer with 0.09 % (w/v) sodium azide and 2 % sucrose.
Preservative:	Sodium azide
Precaution of Use:	This product contains Sodium azide: a POISONOUS AND HAZARDOUS SUBSTANCE which should be handled by trained staff only.
Handling Advice:	Avoid repeated freeze-thaw cycles.
Storage:	-20 °C
Storage Comment:	For short term use, store at 2-8°C up to 1 week. For long term storage, store at -20°C in small aliquots to prevent freeze-thaw cycles.

Product cited in: Swartz, Bor, Misawa, Rekosh, Hammarskjold: "The shuttling SR protein 9G8 plays a role in translation of unspliced mRNA containing a constitutive transport element." in: **The Journal of biological chemistry**, Vol. 282, Issue 27, pp. 19844-53, (2007) ([PubMed](#)).



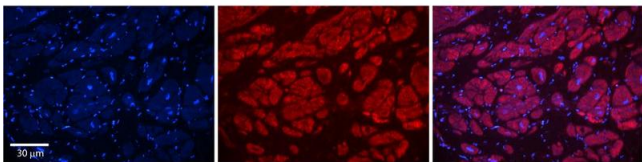
Western Blotting

Image 1. WB Suggested Anti-PIWIL1 Antibody Titration: 0.2-1 ug/ml ELISA Titer: 1:312500 Positive Control: Human Stomach



Western Blotting

Image 2. WB Suggested Anti-PIWIL1 antibody Titration: 1 ug/mL Sample Type: Human heart



Immunohistochemistry

Image 3. Rabbit Anti-PIWIL1 Antibody Formalin Fixed Paraffin Embedded Tissue: Human Adult heart Observed Staining: Cytoplasmic Primary Antibody Concentration: 1:600 Secondary Antibody: Donkey anti-Rabbit-Cy2/3 Secondary Antibody Concentration: 1:200 Magnification: 20X Exposure Time: 0.5 – 2.0 sec Protocol located in Reviews and Data.