

Datasheet for ABIN2773791
anti-OTC antibody (N-Term)[Go to Product page](#)

4 Images

4 Publications

Overview

Quantity:	100 µL
Target:	OTC
Binding Specificity:	N-Term
Reactivity:	Human, Mouse, Rat, Dog, Cow, Horse, Pig, Sheep, Rabbit, Goat, Guinea Pig
Host:	Rabbit
Clonality:	Polyclonal
Conjugate:	This OTC antibody is un-conjugated
Application:	Western Blotting (WB), Immunohistochemistry (IHC)

Product Details

Immunogen:	The immunogen is a synthetic peptide directed towards the N terminal region of human OTC
Sequence:	AFRNGHNFMV RNFRCGQPLQ NKVQLKGRDL LTLKNFTGEE IKYMLWLSAD
Predicted Reactivity:	Cow: 100%, Dog: 100%, Goat: 100%, Guinea Pig: 93%, Horse: 100%, Human: 100%, Mouse: 100%, Pig: 100%, Rabbit: 93%, Rat: 100%, Sheep: 100%
Characteristics:	This is a rabbit polyclonal antibody against OTC. It was validated on Western Blot and immunohistochemistry.
Purification:	Protein A purified

Target Details

Target:	OTC
---------	-----

Target Details

Alternative Name:	OTC (OTC Products)
Background:	<p>OTC is a mitochondrial matrix enzyme. Missense, nonsense, and frameshift mutations in this enzyme lead to ornithine transcarbamylase deficiency, which causes hyperammonemia. Since the gene for this enzyme maps close to that for Duchenne muscular dystrophy, it may play a role in that disease also. This nuclear gene encodes a mitochondrial matrix enzyme. Missense, nonsense, and frameshift mutations in this enzyme lead to ornithine transcarbamylase deficiency, which causes hyperammonemia. Since the gene for this enzyme maps close to that for Duchenne muscular dystrophy, it may play a role in that disease also.</p> <p>Alias Symbols: OCTD</p> <p>Protein Interaction Partner: OTC, TOMM20,</p> <p>Protein Size: 354</p>
Molecular Weight:	39 kDa
Gene ID:	5009
NCBI Accession:	NM_000531 , NP_000522
UniProt:	P00480

Application Details

Application Notes:	Optimal working dilutions should be determined experimentally by the investigator.
Comment:	Antigen size: 354 AA
Restrictions:	For Research Use only

Handling

Format:	Liquid
Concentration:	Lot specific
Buffer:	Liquid. Purified antibody supplied in 1x PBS buffer with 0.09 % (w/v) sodium azide and 2 % sucrose.
Preservative:	Sodium azide
Precaution of Use:	This product contains Sodium azide: a POISONOUS AND HAZARDOUS SUBSTANCE which should be handled by trained staff only.
Handling Advice:	Avoid repeated freeze-thaw cycles.

Handling

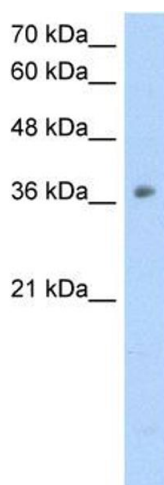
Storage: -20 °C

Storage Comment: For short term use, store at 2-8°C up to 1 week. For long term storage, store at -20°C in small aliquots to prevent freeze-thaw cycles.

Publications

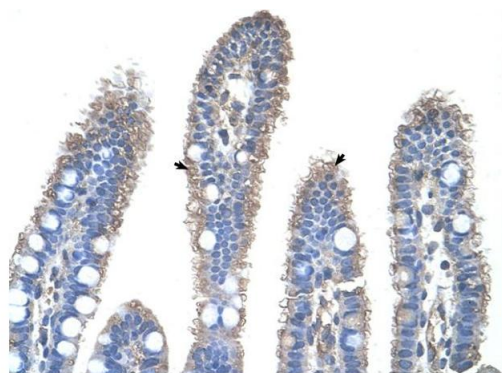
Product cited in: Swartz, Bor, Misawa, Rekosh, Hammarskjold: "The shuttling SR protein 9G8 plays a role in translation of unspliced mRNA containing a constitutive transport element." in: **The Journal of biological chemistry**, Vol. 282, Issue 27, pp. 19844-53, (2007) ([PubMed](#)).

Images



Western Blotting

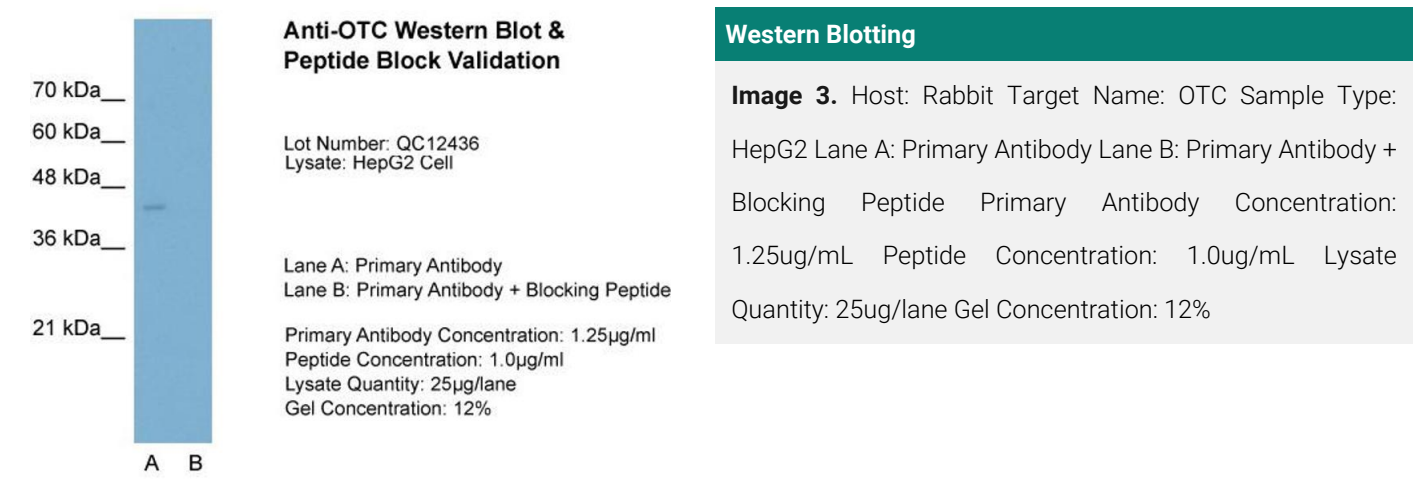
Image 1. WB Suggested Anti-OTC Antibody Titration:
2.5ug/ml Positive Control: HepG2 cell lysate



Rabbit Anti-OTC Antibody
Catalog Number: ARP41766
Lot Number: QC12436
Paraffin Embedded Tissue: Human Intestine
Cells with Positive label: Epithelial cells of intestinal villus (Indicated with Arrows)
Antibody Concentration: 4.0-8.0 µg/ml
Magnification: 400X

Immunohistochemistry

Image 2. Rabbit Anti-OTC Antibody Paraffin Embedded
Tissue: Human Intestine Cellular Data: Epithelial cells of
intestinal villas Antibody Concentration: 4.0-8.0 ug/ml
Magnification: 400X



Please check the [product details page](#) for more images. Overall 4 images are available for ABIN2773791.