

Datasheet for ABIN2773793
anti-CYP4A22 antibody (N-Term)[Go to Product page](#)

2 Images

Overview

Quantity:	100 µL
Target:	CYP4A22
Binding Specificity:	N-Term
Reactivity:	Human, Cow, Rat
Host:	Rabbit
Clonality:	Polyclonal
Conjugate:	This CYP4A22 antibody is un-conjugated
Application:	Western Blotting (WB), Immunohistochemistry (IHC)

Product Details

Immunogen:	The immunogen is a synthetic peptide directed towards the N terminal region of human CYP4A22
Sequence:	MSVSVLSPSR RLGGVSGILQ VTSLIILLLL LIKAAQLYLH RQWLLKALQQ
Predicted Reactivity:	Cow: 86%, Human: 100%, Rat: 79%
Characteristics:	This is a rabbit polyclonal antibody against CYP4A22. It was validated on Western Blot and immunohistochemistry.
Purification:	Affinity Purified

Target Details

Target:	CYP4A22
---------	---------

Target Details

Alternative Name:	CYP4A22 (CYP4A22 Products)
Background:	<p>CYP4A22 is a member of the cytochrome P450 superfamily of enzymes. The cytochrome P450 proteins are monooxygenases which catalyze many reactions involved in drug metabolism and synthesis of cholesterol, steroids and other lipids. This gene encodes a member of the cytochrome P450 superfamily of enzymes. The cytochrome P450 proteins are monooxygenases which catalyze many reactions involved in drug metabolism and synthesis of cholesterol, steroids and other lipids. This gene is part of a cluster of cytochrome P450 genes on chromosome 1p33.</p> <p>Alias Symbols: RP1-18D14.1</p> <p>Protein Size: 519</p>
Molecular Weight:	57 kDa
Gene ID:	284541
NCBI Accession:	NM_001010969 , NP_001010969
UniProt:	Q5TCH4
Pathways:	Regulation of Lipid Metabolism by PPARalpha , Monocarboxylic Acid Catabolic Process

Application Details

Application Notes:	Optimal working dilutions should be determined experimentally by the investigator.
Comment:	Antigen size: 519 AA
Restrictions:	For Research Use only

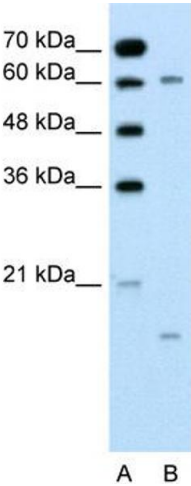
Handling

Format:	Liquid
Concentration:	Lot specific
Buffer:	Liquid. Purified antibody supplied in 1x PBS buffer with 0.09 % (w/v) sodium azide and 2 % sucrose.
Preservative:	Sodium azide
Precaution of Use:	This product contains Sodium azide: a POISONOUS AND HAZARDOUS SUBSTANCE which should be handled by trained staff only.
Handling Advice:	Avoid repeated freeze-thaw cycles.

Handling

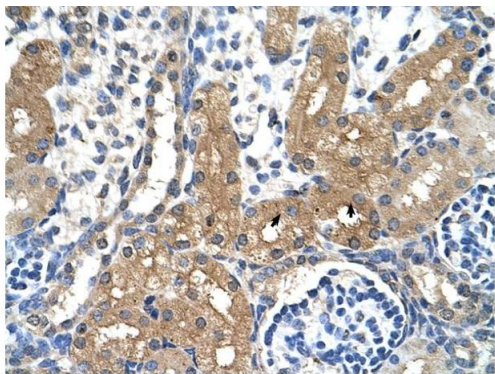
Storage:	-20 °C
Storage Comment:	For short term use, store at 2-8°C up to 1 week. For long term storage, store at -20°C in small aliquots to prevent freeze-thaw cycles.

Images



Western Blotting

Image 1. WB Suggested Anti-CYP4A22 Antibody Titration:
0.2-1 ug/ml Positive Control: Jurkat cell lysate



Immunohistochemistry

Image 2. Rabbit Anti-CYP4A22 Antibody Paraffin Embedded
Tissue: Human Kidney Cellular Data: Epithelial cells of renal
tubule Antibody Concentration: 4.0-8.0 ug/ml Magnification:
400X

Rabbit Anti-CYP4A22 Antibody
Catalog Number: ARP41861
Lot Number: QC12425
Paraffin Embedded Tissue: Human Kidney
Cells with Positive label: Epithelial cells of renal tubule (Indicated with Arrows)
Antibody Concentration: 4.0-8.0 µg/ml
Magnification: 400X