



[Go to Product page](#)

Datasheet for ABIN2773801  
**anti-CTDSPL antibody (N-Term)**

3 Images

Overview

Quantity:	100 µL
Target:	CTDSPL
Binding Specificity:	N-Term
Reactivity:	Human, Mouse, Zebrafish (Danio rerio), Pig, Rat
Host:	Rabbit
Clonality:	Polyclonal
Conjugate:	This CTDSPL antibody is un-conjugated
Application:	Western Blotting (WB), Immunohistochemistry (IHC)

Product Details

Immunogen:	The immunogen is a synthetic peptide directed towards the N terminal region of human CTDSPL
Sequence:	CCFRDYNVEA PPPSSPSVLP PLVEENGLQ KPPAKYLLPE VTVLDYGKKC
Predicted Reactivity:	Human: 100%, Mouse: 100%, Pig: 100%, Rat: 100%, Zebrafish: 90%
Characteristics:	This is a rabbit polyclonal antibody against CTDSPL. It was validated on Western Blot and immunohistochemistry.
Purification:	Affinity Purified

Target Details

Target:	CTDSPL
---------	--------

## Target Details

---

Alternative Name:	CTDSPL ( <a href="#">CTDSPL Products</a> )
Background:	CTDSPL may function as a phosphatase involved in the regulation of cell growth and differentiation. Alias Symbols: C3orf8, HYA22, PSR1, SCP3, RBSP3 Protein Interaction Partner: ced-5, ced-12, ELAVL1, UBC, CDK9, SNAI1, Protein Size: 265
Molecular Weight:	30 kDa
Gene ID:	10217
NCBI Accession:	<a href="#">NM_005808</a> , <a href="#">NP_005799</a>
UniProt:	<a href="#">Q3ZTU0</a>

## Application Details

---

Application Notes:	Optimal working dilutions should be determined experimentally by the investigator.
Comment:	Antigen size: 265 AA
Restrictions:	For Research Use only

## Handling

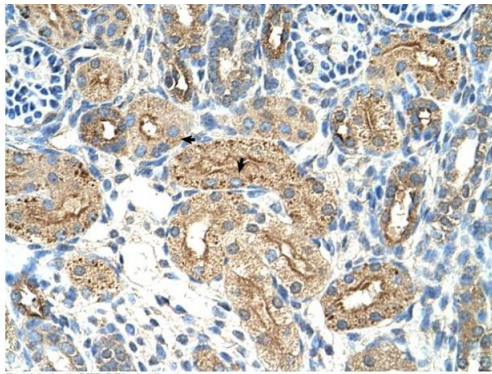
---

Format:	Liquid
Concentration:	Lot specific
Buffer:	Liquid. Purified antibody supplied in 1x PBS buffer with 0.09 % (w/v) sodium azide and 2 % sucrose.
Preservative:	Sodium azide
Precaution of Use:	This product contains Sodium azide: a POISONOUS AND HAZARDOUS SUBSTANCE which should be handled by trained staff only.
Handling Advice:	Avoid repeated freeze-thaw cycles.
Storage:	-20 °C
Storage Comment:	For short term use, store at 2-8°C up to 1 week. For long term storage, store at -20°C in small aliquots to prevent freeze-thaw cycles.



### Western Blotting

**Image 1.** WB Suggested Anti-CTDSPL Antibody Titration: 0.2-1 ug/ml Positive Control: DLD1 cell lysate CTDSPL is strongly supported by BioGPS gene expression data to be expressed in Human DLD1 cells

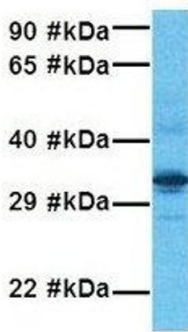


### Immunohistochemistry

**Image 2.** Rabbit Anti-CTDSPL Antibody Paraffin Embedded Tissue: Human Kidney Cellular Data: Epithelial cells of renal tubule Antibody Concentration: 4.0-8.0 ug/ml Magnification: 400X

Rabbit Anti-CTDSPL Antibody  
Catalog Number: ARP42261  
Lot Number: QC12806  
Paraffin Embedded Tissue: Human Kidney  
Cells with Positive label: Epithelial cells of renal tubule (Indicated with Arrows)  
Antibody Concentration: 4.0-8.0 µg/ml  
Magnification: 400X

## CTDSPL



### Western Blotting

**Image 3.** Host: Rabbit Target Name: CTDSPL Sample Tissue: Human Fetal Liver Antibody Dilution: 1.0ug/ml