

## Datasheet for ABIN2773805 anti-DCXR antibody (Middle Region)



[Go to Product page](#)

2 Images

1 Publication

### Overview

Quantity:	100 µL
Target:	DCXR
Binding Specificity:	Middle Region
Reactivity:	Human, Mouse, Rat, Zebrafish (Danio rerio), Cow, Guinea Pig, Horse, Dog
Host:	Rabbit
Clonality:	Polyclonal
Conjugate:	This DCXR antibody is un-conjugated
Application:	Western Blotting (WB), Immunohistochemistry (IHC)

### Product Details

Immunogen:	The immunogen is a synthetic peptide directed towards the middle region of human DCXR
Sequence:	STKGALDMLT KVMALGLPH KIRVNAVNP VVMTSMGQAT WSDPHKAKTM
Predicted Reactivity:	Cow: 100%, Dog: 93%, Guinea Pig: 100%, Horse: 100%, Human: 100%, Mouse: 100%, Rat: 100%, Zebrafish: 86%
Characteristics:	This is a rabbit polyclonal antibody against DCXR. It was validated on Western Blot and immunohistochemistry.
Purification:	Affinity Purified

### Target Details

Target:	DCXR
---------	------

## Target Details

Alternative Name:	DCXR ( <a href="#">DCXR Products</a> )
Background:	<p>DCXR is an enzyme that has both diacetyl reductase and L-xylulose reductase activities.DCXR is an enzyme that has both diacetyl reductase (EC 1.1.1.5) and L-xylulose reductase (EC 1.1.1.10) activities (Nakagawa et al., 2002).[supplied by OMIM].</p> <p>Alias Symbols: DCR, HCR11, KIDCR, P34H, XR, HCR2, SDR20C1</p> <p>Protein Interaction Partner: DCXR, UBC, CRADD, APP, DMWD,</p> <p>Protein Size: 244</p>
Molecular Weight:	27 kDa
Gene ID:	51181
NCBI Accession:	<a href="#">NM_016286</a> , <a href="#">NP_057370</a>
UniProt:	<a href="#">Q7Z4W1</a>
Pathways:	<a href="#">Glycosaminoglycan Metabolic Process</a> , <a href="#">Monocarboxylic Acid Catabolic Process</a>

## Application Details

Application Notes:	Optimal working dilutions should be determined experimentally by the investigator.
Comment:	Antigen size: 244 AA
Restrictions:	For Research Use only

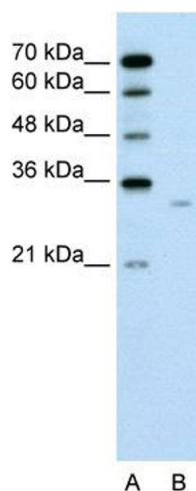
## Handling

Format:	Liquid
Concentration:	Lot specific
Buffer:	Liquid. Purified antibody supplied in 1x PBS buffer with 0.09 % (w/v) sodium azide and 2 % sucrose.
Preservative:	Sodium azide
Precaution of Use:	This product contains Sodium azide: a POISONOUS AND HAZARDOUS SUBSTANCE which should be handled by trained staff only.
Handling Advice:	Avoid repeated freeze-thaw cycles.
Storage:	-20 °C
Storage Comment:	For short term use, store at 2-8°C up to 1 week. For long term storage, store at -20°C in small aliquots to prevent freeze-thaw cycles.

## Publications

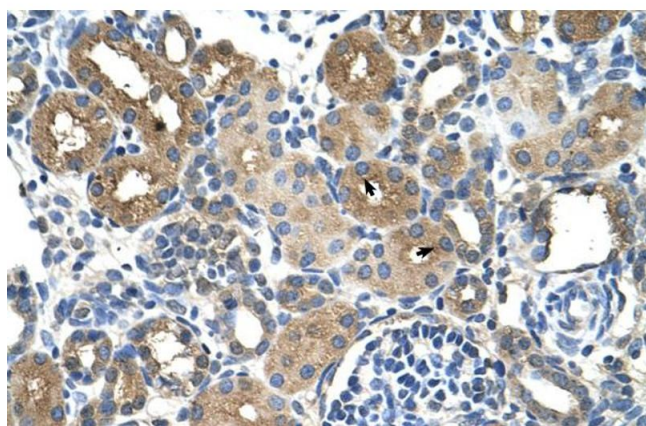
Product cited in: Ewing, Chu, Elisma, Li, Taylor, Climie, McBroom-Cerajewski, Robinson, OConnor, Li, Taylor, Dharsee, Ho, Heilbut, Moore, Zhang, Ornatsky, Bukhman, Ethier, Sheng, Vasilescu, Abu-Farha, Lambert, Duewel et al.: "Large-scale mapping of human protein-protein interactions by mass spectrometry. ..." in: **Molecular systems biology**, Vol. 3, pp. 89, (2007) ([PubMed](#)).

## Images



### Western Blotting

**Image 1.** WB Suggested Anti-DCXR Antibody Titration: 0.2-1 ug/ml Positive Control: Jurkat cell lysate



### Immunohistochemistry

**Image 2.** Human kidney