



[Go to Product page](#)

Datasheet for ABIN2773806

anti-BSDC1 antibody (C-Term)

1 Image

Overview

Quantity:	100 µL
Target:	BSDC1
Binding Specificity:	C-Term
Reactivity:	Human, Mouse, Dog, Cow, Guinea Pig, Horse, Rabbit, Rat, Zebrafish (Danio rerio)
Host:	Rabbit
Clonality:	Polyclonal
Conjugate:	This BSDC1 antibody is un-conjugated
Application:	Western Blotting (WB)

Product Details

Immunogen:	The immunogen is a synthetic peptide directed towards the C-terminal region of Human BSDC1
Sequence:	HTGGPEPRPP ARVETLREEA PTDLRVFELN SDGKSTPSN NGKKGSTDI
Predicted Reactivity:	Cow: 100%, Dog: 100%, Guinea Pig: 100%, Horse: 100%, Human: 100%, Mouse: 100%, Rabbit: 100%, Rat: 100%, Zebrafish: 100%
Characteristics:	This is a rabbit polyclonal antibody against BSDC1. It was validated on Western Blot.
Purification:	Affinity Purified

Target Details

Target:	BSDC1
Alternative Name:	BSDC1 (BSDC1 Products)

Target Details

Background: The function of this protein remains unknown.
Protein Interaction Partner: KLC1, UBC, Bsdc1, PHC2,
Protein Size: 353

Molecular Weight: 38 kDa

Gene ID: 55108

Application Details

Restrictions: For Research Use only

Handling

Format: Liquid

Concentration: 1 mg/mL

Buffer: Liquid. Purified antibody supplied in 1x PBS buffer with 0.09 % (w/v) sodium azide and 2 % sucrose.

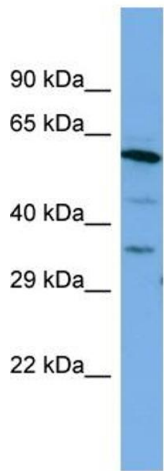
Preservative: Sodium azide

Precaution of Use: This product contains Sodium azide: a POISONOUS AND HAZARDOUS SUBSTANCE which should be handled by trained staff only.

Handling Advice: Avoid repeat freeze-thaw cycles.

Storage: -20 °C

Storage Comment: For short term use, store at 2-8°C up to 1 week. For long term storage, store at -20°C in small aliquots to prevent freeze-thaw cycles.



Host: Rabbit
Target Name: BSDC1
Sample Tissue: PANC1 Cell Lysate
Antibody Dilution: 1.0µg/ml

Western Blotting

Image 1. Host: Rabbit Target Name: BSDC1 Sample Type: PANC1 Whole cell lysates Antibody Dilution: 1.0ug/ml
BSDC1 is strongly supported by BioGPS gene expression data to be expressed in Human PANC1 cells