

Datasheet for ABIN2773813  
**anti-GTPBP10 antibody (Middle Region)**[Go to Product page](#)

## 3 Images

## Overview

Quantity:	100 µL
Target:	GTPBP10
Binding Specificity:	Middle Region
Reactivity:	Human, Mouse, Rat, Rabbit, Guinea Pig, Horse, Pig, Dog, Cow, Zebrafish (Danio rerio)
Host:	Rabbit
Clonality:	Polyclonal
Conjugate:	This GTPBP10 antibody is un-conjugated
Application:	Western Blotting (WB), Immunohistochemistry (IHC)

## Product Details

Immunogen:	The immunogen is a synthetic peptide directed towards the middle region of human GTPBP10
Sequence:	IILLTKELEL YKEELQTKPA LLAVNKMMDLP DAQDKFHELM SQLQNPCKDFL
Predicted Reactivity:	Cow: 92%, Dog: 92%, Guinea Pig: 93%, Horse: 100%, Human: 100%, Mouse: 100%, Pig: 100%, Rabbit: 100%, Rat: 100%, Zebrafish: 85%
Characteristics:	This is a rabbit polyclonal antibody against GTPBP10. It was validated on Western Blot using a cell lysate as a positive control.
Purification:	Affinity Purified

## Target Details

Target:	GTPBP10
---------	---------

## Target Details

Alternative Name:	GTPBP10 ( <a href="#">GTPBP10 Products</a> )
Background:	<p>Small G proteins, such as GTPBP10, act as molecular switches that play crucial roles in the regulation of fundamental cellular processes such as protein synthesis, nuclear transport, membrane trafficking, and signal transduction. Small G proteins, such as GTPBP10, act as molecular switches that play crucial roles in the regulation of fundamental cellular processes such as protein synthesis, nuclear transport, membrane trafficking, and signal transduction (Hirano et al., 2006 [PubMed 17054726]). [supplied by OMIM].</p> <p>Alias Symbols: DKFZP686A10121, DKFZp686A10121, FLJ38242, MGC104191, ObgH2, UG0751c10</p> <p>Protein Interaction Partner: MTUS2, PNMA1, GOLGA2, CAND1, UBC, ICT1, NECAB2, Protein Size: 387</p>
Molecular Weight:	43 kDa
Gene ID:	85865
NCBI Accession:	<a href="#">NM_033107</a> , <a href="#">NP_149098</a>
UniProt:	<a href="#">A4D1E9</a>

## Application Details

Application Notes:	Optimal working dilutions should be determined experimentally by the investigator.
Comment:	Antigen size: 387 AA
Restrictions:	For Research Use only

## Handling

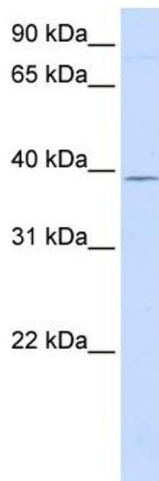
Format:	Liquid
Concentration:	Lot specific
Buffer:	Liquid. Purified antibody supplied in 1x PBS buffer with 0.09 % (w/v) sodium azide and 2 % sucrose.
Preservative:	Sodium azide
Precaution of Use:	This product contains Sodium azide: a POISONOUS AND HAZARDOUS SUBSTANCE which should be handled by trained staff only.
Handling Advice:	Avoid repeated freeze-thaw cycles.

## Handling

Storage: -20 °C

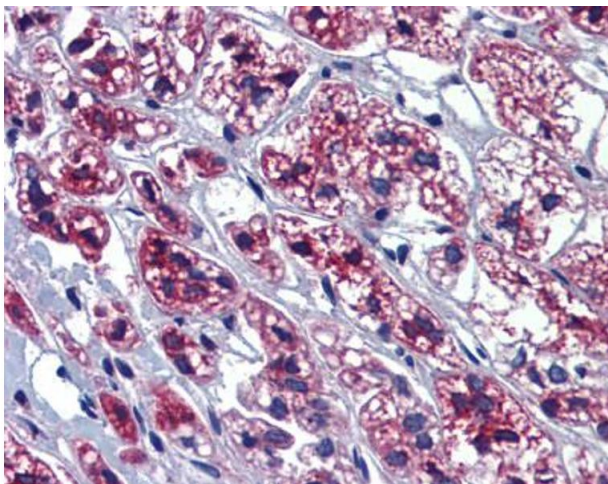
Storage Comment: For short term use, store at 2-8°C up to 1 week. For long term storage, store at -20°C in small aliquots to prevent freeze-thaw cycles.

## Images



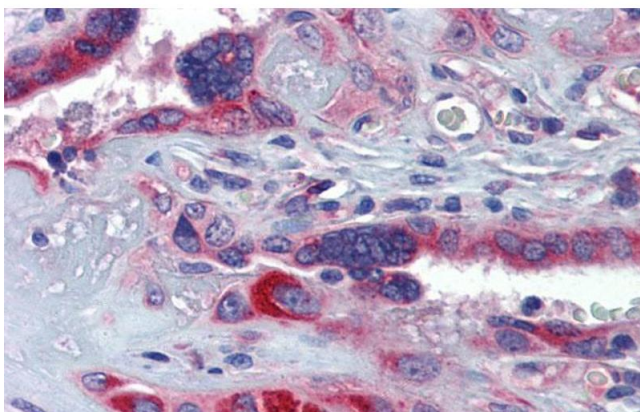
### Western Blotting

**Image 1.** WB Suggested Anti-GTPB Antibody Titration: 1 ug/ml Positive Control: 721\_B cell lysate GTPB is supported by BioGPS gene expression data to be expressed in 721\_B



### Immunohistochemistry

**Image 2.**



### Immunohistochemistry

**Image 3.** Immunohistochemistry with Human Placenta lysate tissue at an antibody concentration of 5.0 ug/ml using anti-GTPB antibody