

Datasheet for ABIN2773829  
**anti-CYP46A1 antibody (C-Term)**

## 3 Images

[Go to Product page](#)

## Overview

Quantity:	100 µL
Target:	CYP46A1
Binding Specificity:	C-Term
Reactivity:	Human, Mouse, Rat, Cow, Dog, Guinea Pig, Horse, Goat
Host:	Rabbit
Clonality:	Polyclonal
Conjugate:	This CYP46A1 antibody is un-conjugated
Application:	Western Blotting (WB)

## Product Details

Immunogen:	The immunogen is a synthetic peptide directed towards the C terminal region of human CYP46A1
Sequence:	YVMGRMDTYF EDPLTFNPDR FGPGAPKPRF TYFPFSLGHR SCIGQQFAQM
Predicted Reactivity:	Cow: 100%, Dog: 100%, Goat: 100%, Guinea Pig: 100%, Horse: 100%, Human: 100%, Mouse: 100%, Rat: 100%
Characteristics:	This is a rabbit polyclonal antibody against CYP46A1. It was validated on Western Blot using a cell lysate as a positive control.
Purification:	Affinity Purified

## Target Details

Target:	CYP46A1
---------	---------

## Target Details

Alternative Name:	CYP46A1 ( <a href="#">CYP46A1 Products</a> )
Background:	<p>CYP46A1 is a member of the cytochrome P450 superfamily of enzymes. The cytochrome P450 proteins are monooxygenases which catalyze many reactions involved in drug metabolism and synthesis of cholesterol, steroids and other lipids. This protein localizes to the endoplasmic reticulum and hydroxylates medium-chain fatty acids such as laurate and myristate. This gene encodes a member of the cytochrome P450 superfamily of enzymes. The cytochrome P450 proteins are monooxygenases which catalyze many reactions involved in drug metabolism and synthesis of cholesterol, steroids and other lipids. This endoplasmic reticulum protein is expressed in the brain, where it converts cholesterol to 24S-hydroxycholesterol. While cholesterol cannot pass the blood-brain barrier, 24S-hydroxycholesterol can be secreted in the brain into the circulation to be returned to the liver for catabolism. Publication Note: This RefSeq record includes a subset of the publications that are available for this gene. Please see the Entrez Gene record to access additional publications.</p> <p>Alias Symbols: CP46, CYP46</p> <p>Protein Size: 500</p>
Molecular Weight:	57 kDa
Gene ID:	10858
NCBI Accession:	<a href="#">NM_006668</a> , <a href="#">NP_006659</a>
UniProt:	<a href="#">Q9Y6A2</a>

## Application Details

Application Notes:	Optimal working dilutions should be determined experimentally by the investigator.
Comment:	Antigen size: 500 AA
Restrictions:	For Research Use only

## Handling

Format:	Liquid
Concentration:	Lot specific
Buffer:	Liquid. Purified antibody supplied in 1x PBS buffer with 0.09 % (w/v) sodium azide and 2 % sucrose.
Preservative:	Sodium azide

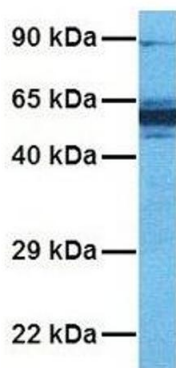
## Handling

Precaution of Use:	This product contains Sodium azide: a POISONOUS AND HAZARDOUS SUBSTANCE which should be handled by trained staff only.
Handling Advice:	Avoid repeated freeze-thaw cycles.
Storage:	-20 °C
Storage Comment:	For short term use, store at 2-8°C up to 1 week. For long term storage, store at -20°C in small aliquots to prevent freeze-thaw cycles.

## Images



### CYP46A1



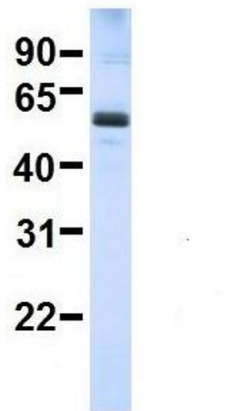
#### Western Blotting

**Image 1.** WB Suggested Anti-CYP46A1 Antibody Titration: 0.2-1 ug/ml ELISA Titer: 1:312500 Positive Control: HepG2 cell lysate

#### Western Blotting

**Image 2.** Host: Rabbit Target Name: CYP46A1 Sample Tissue: Human PANC1 Antibody Dilution: 1.0ug/ml

# CYP46A1



## Western Blotting

**Image 3.** Host: Rabbit Target Name: SERPINA3 Sample Type: Human Adult Placenta Antibody Dilution: 1.0ug/ml