

Datasheet for ABIN2773831

anti-SLC12A2 antibody (C-Term)[2 Images](#)[2 Publications](#)[Go to Product page](#)

Overview

Quantity:	100 µL
Target:	SLC12A2
Binding Specificity:	C-Term
Reactivity:	Human, Rat, Mouse, Cow, Dog, Pig, Horse, Guinea Pig, Rabbit, Zebrafish (Danio rerio)
Host:	Rabbit
Clonality:	Polyclonal
Conjugate:	This SLC12A2 antibody is un-conjugated
Application:	Western Blotting (WB)

Product Details

Immunogen:	The immunogen is a synthetic peptide directed towards the C terminal region of human SLC12A2
Sequence:	IIAFEEIIIEP YRLHEDDKEQ DIADKMKED E PWRITDNELE LYKTKTYRQI
Predicted Reactivity:	Cow: 100%, Dog: 100%, Guinea Pig: 92%, Horse: 100%, Human: 100%, Mouse: 100%, Pig: 100%, Rabbit: 100%, Rat: 100%, Zebrafish: 77%
Characteristics:	This is a rabbit polyclonal antibody against SLC12A2. It was validated on Western Blot.
Purification:	Protein A purified

Target Details

Target:	SLC12A2
---------	---------

Target Details

Alternative Name:	SLC12A2 (SLC12A2 Products)
Background:	<p>By moving chloride into epithelial cells, the Na-K-Cl cotransporter SLC12A2 aids transcellular movement of chloride across both secretory and absorptive epithelia. By moving chloride into epithelial cells, the Na-K-Cl cotransporter SLC12A2 aids transcellular movement of chloride across both secretory and absorptive epithelia (Payne et al., 1995). See also SLC12A1 (MIM 600839) and SLC12A3 (MIM 600968). [supplied by OMIM].</p> <p>Alias Symbols: BSC, BSC2, MGC104233, NKCC1</p> <p>Protein Interaction Partner: EGFR, MDM2, ATP4A, COMMD1, UBC, SEC13, STK39, OXSR1, SLC12A2, MAPK14,</p> <p>Protein Size: 1212</p>
Molecular Weight:	131 kDa
Gene ID:	6558
NCBI Accession:	NM_001046 , NP_001037
UniProt:	P55011
Pathways:	Sensory Perception of Sound

Application Details

Application Notes:	Optimal working dilutions should be determined experimentally by the investigator.
Comment:	Antigen size: 1212 AA
Restrictions:	For Research Use only

Handling

Format:	Liquid
Concentration:	Lot specific
Buffer:	Liquid. Purified antibody supplied in 1x PBS buffer with 0.09 % (w/v) sodium azide and 2 % sucrose.
Preservative:	Sodium azide
Precaution of Use:	This product contains Sodium azide: a POISONOUS AND HAZARDOUS SUBSTANCE which should be handled by trained staff only.
Handling Advice:	Avoid repeated freeze-thaw cycles.

Handling

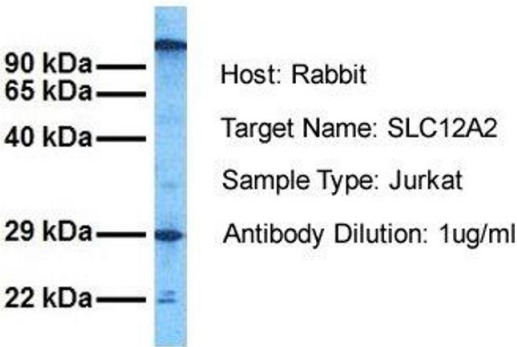
Storage:	-20 °C
Storage Comment:	For short term use, store at 2-8°C up to 1 week. For long term storage, store at -20°C in small aliquots to prevent freeze-thaw cycles.

Publications

Product cited in:	Gerhard, Wagner, Feingold, Shenmen, Grouse, Schuler, Klein, Old, Rasooly, Good, Guyer, Peck, Derge, Lipman, Collins, Jang, Sherry, Feolo, Misquitta, Lee, Rotmistrovsky, Greenhut, Schaefer, Buetow et al.: "The status, quality, and expansion of the NIH full-length cDNA project: the Mammalian Gene Collection (MGC). ..." in: Genome research , Vol. 14, Issue 10B, pp. 2121-7, (2004) (PubMed).
-------------------	--

Images

SLC12A2



Western Blotting

Image 1. Host: Rabbit Target Name: SLC12A2 Sample Tissue: Human Jurkat Antibody Dilution: 1.0ug/ml



Western Blotting

Image 2. WB Suggested Anti-SLC12A2 Antibody Titration: 5.0ug/ml ELISA Titer: 1:1562500 Positive Control: DLD1 cell lysate SLC12A2 is supported by BioGPS gene expression data to be expressed in DLD1