

Datasheet for ABIN2773833
anti-SLC9A3 antibody (Middle Region)



[Go to Product page](#)

2 Images

Overview

Quantity:	100 µL
Target:	SLC9A3
Binding Specificity:	Middle Region
Reactivity:	Rat, Human, Mouse, Rabbit, Cow, Pig, Sheep, Dog
Host:	Rabbit
Clonality:	Polyclonal
Conjugate:	This SLC9A3 antibody is un-conjugated
Application:	Western Blotting (WB)

Product Details

Immunogen:	The immunogen is a synthetic peptide directed towards the middle region of human SLC9A3
Sequence:	AEDMVTHHTL QQYLYKPRQE YKHLYSRHEL TPTEDEKQDR EIFHRTMRKR
Predicted Reactivity:	Cow: 77%, Dog: 92%, Human: 100%, Mouse: 92%, Pig: 77%, Rabbit: 77%, Rat: 92%, Sheep: 77%
Characteristics:	This is a rabbit polyclonal antibody against SLC9A3. It was validated on Western Blot.
Purification:	Affinity Purified

Target Details

Target:	SLC9A3
Alternative Name:	SLC9A3 (SLC9A3 Products)
Background:	SLC9A3 is involved in pH regulation to eliminate acids generated by active metabolism or to

Target Details

counter adverse environmental conditions. SLC9A3 is the major proton extruding system driven by the inward sodium ion chemical gradient. SLC9A3 plays an important role in signal transduction.

Alias Symbols: MGC126718, MGC126720, NHE3

Protein Interaction Partner: USP48, UBC, DRD3, NEDD4L, CHP2, MAST2, CHP1, SLC9A3R2, SLC9A3R1, PDZK1, SHANK2, LRP2, SLC9A3,

Protein Size: 834

Molecular Weight: 93 kDa

Gene ID: 6550

NCBI Accession: [NM_004174](#), [NP_004165](#)

UniProt: [P48764](#)

Pathways: [Proton Transport](#)

Application Details

Application Notes: Optimal working dilutions should be determined experimentally by the investigator.

Comment: Antigen size: 834 AA

Restrictions: For Research Use only

Handling

Format: Liquid

Concentration: Lot specific

Buffer: Liquid. Purified antibody supplied in 1x PBS buffer with 0.09 % (w/v) sodium azide and 2 % sucrose.

Preservative: Sodium azide

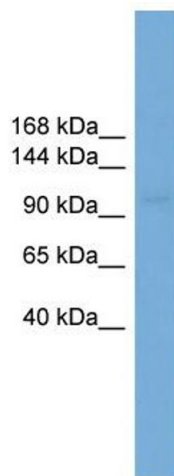
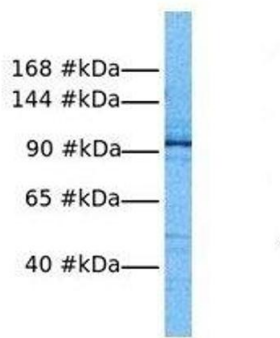
Precaution of Use: This product contains Sodium azide: a POISONOUS AND HAZARDOUS SUBSTANCE which should be handled by trained staff only.

Handling Advice: Avoid repeated freeze-thaw cycles.

Storage: -20 °C

Storage Comment: For short term use, store at 2-8°C up to 1 week. For long term storage, store at -20°C in small aliquots to prevent freeze-thaw cycles.

SLC9A3



Western Blotting

Image 1. Host: Rabbit Target Name: SLC9A3 Sample Tissue: Human RPMI-8226 Antibody Dilution: 1.0ug/ml

Western Blotting

Image 2. WB Suggested Anti-SLC9A3 Antibody Titration: 0.2-1 ug/ml ELISA Titer: 1:62500 Positive Control: COLO205 cell lysate