



[Go to Product page](#)

Datasheet for ABIN2773835  
**anti-SLC25A44 antibody (Middle Region)**

1 Image

Overview

Quantity:	100 µL
Target:	SLC25A44
Binding Specificity:	Middle Region
Reactivity:	Human, Mouse, Rat, Cow, Dog, Guinea Pig, Horse, Rabbit, Zebrafish (Danio rerio)
Host:	Rabbit
Clonality:	Polyclonal
Conjugate:	This SLC25A44 antibody is un-conjugated
Application:	Western Blotting (WB)

Product Details

Immunogen:	The immunogen is a synthetic peptide directed towards the middle region of human SLC25A44
Sequence:	QLMAEEGPWG LMKGLSARII SATPSTIVIV VGYESLKKLS LRPELVDSRH
Predicted Reactivity:	Cow: 100%, Dog: 100%, Guinea Pig: 100%, Horse: 100%, Human: 100%, Mouse: 100%, Rabbit: 100%, Rat: 100%, Zebrafish: 100%
Characteristics:	This is a rabbit polyclonal antibody against SLC25A44. It was validated on Western Blot.
Purification:	Affinity Purified

Target Details

Target:	SLC25A44
Alternative Name:	SLC25A44 ( <a href="#">SLC25A44 Products</a> )

## Target Details

---

Background: The function of SLC25A44 remains unknown.  
Alias Symbols: FLJ90431, KIAA0446, RP11-54H19.3  
Protein Interaction Partner: JUP, ELAVL1,  
Protein Size: 314

---

Molecular Weight: 35 kDa

---

Gene ID: 9673

---

NCBI Accession: [NM\\_014655](#), [NP\\_055470](#)

---

UniProt: [Q96H78](#)

---

## Application Details

---

Application Notes: Optimal working dilutions should be determined experimentally by the investigator.

---

Comment: Antigen size: 314 AA

---

Restrictions: For Research Use only

---

## Handling

---

Format: Liquid

---

Concentration: Lot specific

---

Buffer: Liquid. Purified antibody supplied in 1x PBS buffer with 0.09 % (w/v) sodium azide and 2 % sucrose.

---

Preservative: Sodium azide

---

Precaution of Use: This product contains Sodium azide: a POISONOUS AND HAZARDOUS SUBSTANCE which should be handled by trained staff only.

---

Handling Advice: Avoid repeated freeze-thaw cycles.

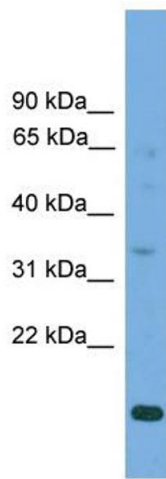
---

Storage: -20 °C

---

Storage Comment: For short term use, store at 2-8°C up to 1 week. For long term storage, store at -20°C in small aliquots to prevent freeze-thaw cycles.

---



### Western Blotting

**Image 1.** WB Suggested Anti-SLC25A44 Antibody Titration:  
0.2-1 ug/ml ELISA Titer: 1:312500 Positive Control: HepG2  
cell lysate