

Datasheet for ABIN2773839
anti-SLC25A25 antibody (C-Term)[Go to Product page](#)

1 Image

Overview

Quantity:	100 µL
Target:	SLC25A25
Binding Specificity:	C-Term
Reactivity:	Human, Rat, Mouse, Cow, Dog, Horse, Guinea Pig, Zebrafish (Danio rerio), Rabbit, Pig
Host:	Rabbit
Clonality:	Polyclonal
Conjugate:	This SLC25A25 antibody is un-conjugated
Application:	Western Blotting (WB)

Product Details

Immunogen:	The immunogen is a synthetic peptide directed towards the C-terminal region of MOUSE Slc25a25
Sequence:	MSSLFKQILR TEGAFGLYRG LAPNFMKVIP AVSISYVVYE NLKITLGVQS
Predicted Reactivity:	Cow: 100%, Dog: 86%, Guinea Pig: 93%, Horse: 93%, Human: 100%, Mouse: 93%, Pig: 100%, Rabbit: 93%, Rat: 93%, Zebrafish: 79%
Characteristics:	This is a rabbit polyclonal antibody against Slc25a25. It was validated on Western Blot.
Purification:	Affinity Purified

Target Details

Target:	SLC25A25
---------	----------

Target Details

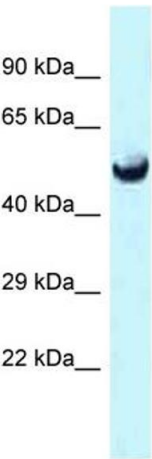
Alternative Name:	Slc25a25 (SLC25A25 Products)
Background:	<p>Slc25a25 is a calcium-dependent mitochondrial solute carrier. Mitochondrial solute carriers shuttle metabolites, nucleotides, and cofactors through the mitochondrial inner membrane. It may act as a ATP-Mg/Pi exchanger that mediates the transport of Mg-ATP in exchange for phosphate, catalyzing the net uptake or efflux of adenine nucleotides into or from the mitochondria.</p> <p>Protein Size: 501</p>
Molecular Weight:	55 kDa
Gene ID:	227731

Application Details

Application Notes:	Optimal working dilution should be determined by the investigator.
Restrictions:	For Research Use only

Handling

Format:	Liquid
Concentration:	1 mg/mL
Buffer:	Liquid. Purified antibody supplied in 1x PBS buffer with 0.09 % (w/v) sodium azide and 2 % sucrose.
Preservative:	Sodium azide
Precaution of Use:	This product contains Sodium azide: a POISONOUS AND HAZARDOUS SUBSTANCE which should be handled by trained staff only.
Handling Advice:	Avoid repeat freeze-thaw cycles.
Storage:	-20 °C
Storage Comment:	For short term use, store at 2-8°C up to 1 week. For long term storage, store at -20°C in small aliquots to prevent freeze-thaw cycles.



Host: Rabbit
Target Name: Slc25a25
Sample Tissue: Mouse Heart Lysate
Antibody Dilution: 1.0µg/ml

Western Blotting

Image 1. Host: Rabbit Target Name: Slc25a25 Sample Type: Mouse Heart lysates Antibody Dilution: 1.0ug/ml