

Datasheet for ABIN2773841
anti-Patched 1 antibody (C-Term)[Go to Product page](#)

3 Images

1 Publication

Overview

Quantity:	100 µL
Target:	Patched 1 (PTCH1)
Binding Specificity:	C-Term
Reactivity:	Human, Mouse, Rat, Zebrafish (Danio rerio), Dog, Cow, Horse, Guinea Pig, Rabbit
Host:	Rabbit
Clonality:	Polyclonal
Conjugate:	This Patched 1 antibody is un-conjugated
Application:	Western Blotting (WB), Immunohistochemistry (IHC)

Product Details

Immunogen:	The immunogen is a synthetic peptide directed towards the C terminal region of human PTCH1
Sequence:	TILGVLNGLV LLPVLLSFFG PYPEVSPANG LNRLPTPSPE PPPSVVRFAM
Predicted Reactivity:	Cow: 100%, Dog: 100%, Guinea Pig: 100%, Horse: 100%, Human: 100%, Mouse: 100%, Rabbit: 93%, Rat: 100%, Zebrafish: 79%
Characteristics:	This is a rabbit polyclonal antibody against PTCH1. It was validated on Western Blot using a cell lysate as a positive control.
Purification:	Affinity Purified

Target Details

Target:	Patched 1 (PTCH1)
---------	-------------------

Target Details

Alternative Name:	PTCH1 (PTCH1 Products)
Background:	<p>PTCH1 is a member of the patched gene family. The protein is the receptor for sonic hedgehog, a secreted molecule implicated in the formation of embryonic structures and in tumorigenesis. It functions as a tumor suppressor. Mutations of its gene have been associated with nevoid basal cell carcinoma syndrome, esophageal squamous cell carcinoma, trichoepitheliomas, transitional cell carcinomas of the bladder, as well as holoprosencephaly.</p> <p>Alias Symbols: PTC, BCNS, HPE7, PTC1, PTCH, NBCCS, PTCH11</p> <p>Protein Interaction Partner: ITCH, SMURF2, SMURF1, NEDD4L, WWP2, WWP1, UBC, NEDD4, FHL2, CASP9, SMO, CAV1, HIPK2, DHH, IHH, SHH, CCNB1, CDK1,</p> <p>Protein Size: 345</p>
Molecular Weight:	37 kDa
Gene ID:	5727
NCBI Accession:	NM_000264
UniProt:	Q6TKP8
Pathways:	Hedgehog Signaling , Carbohydrate Homeostasis , Tube Formation

Application Details

Application Notes:	Optimal working dilutions should be determined experimentally by the investigator.
Comment:	Antigen size: 345 AA
Restrictions:	For Research Use only

Handling

Format:	Liquid
Concentration:	Lot specific
Buffer:	Liquid. Purified antibody supplied in 1x PBS buffer with 0.09 % (w/v) sodium azide and 2 % sucrose.
Preservative:	Sodium azide
Precaution of Use:	This product contains Sodium azide: a POISONOUS AND HAZARDOUS SUBSTANCE which should be handled by trained staff only.
Handling Advice:	Avoid repeated freeze-thaw cycles.

Handling

Storage: -20 °C

Storage Comment: For short term use, store at 2-8°C up to 1 week. For long term storage, store at -20°C in small aliquots to prevent freeze-thaw cycles.

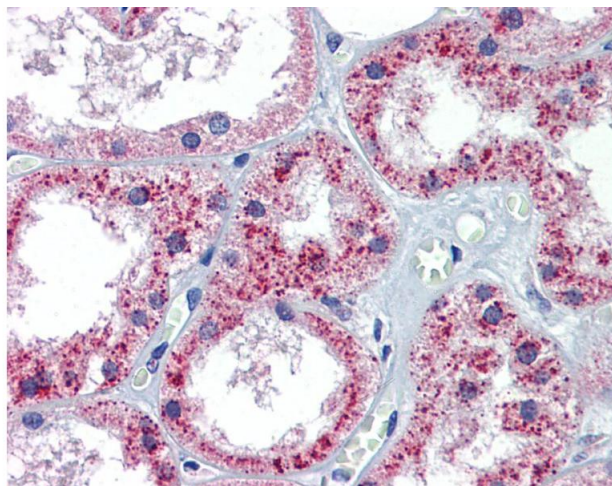
Publications

Product cited in: Day, McCarty, Ockerse, Head, Rohn: "Proteolytic Cleavage of Apolipoprotein E in the Down Syndrome Brain." in: **Aging and disease**, Vol. 7, Issue 3, pp. 267-77, (2016) ([PubMed](#)).

Rohn, Day, Sheffield, Rajic, Poon: "Apolipoprotein E pathology in vascular dementia." in: **International journal of clinical and experimental pathology**, Vol. 7, Issue 3, pp. 938-47, (2014) ([PubMed](#)).

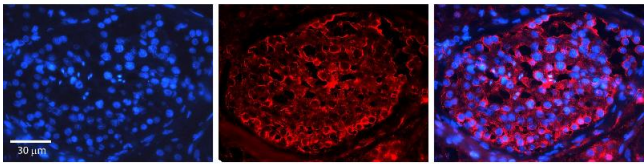
Rohn, Catlin, Coonse, Habig: "Identification of an amino-terminal fragment of apolipoprotein E4 that localizes to neurofibrillary tangles of the Alzheimer's disease brain." in: **Brain research**, Vol. 1475, pp. 106-15, (2012) ([PubMed](#)).

Images



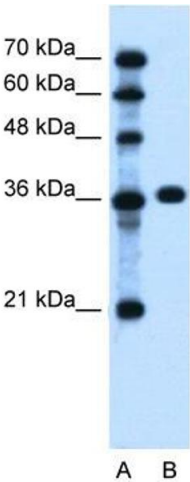
Immunohistochemistry

Image 1.



Immunohistochemistry

Image 2. Rabbit Anti-PTCH1 Antibody Formalin Fixed Paraffin Embedded Tissue: Human Testis Tissue Observed Staining: Plasma membrane Primary Antibody Concentration: 1:600 Other Working Concentrations: N/A Secondary Antibody: Donkey anti-Rabbit-Cy3 Secondary Antibody Concentration: 1:200 Magnification: 20X Exposure Time: 0.5 - 2.0 sec



Western Blotting

Image 3. WB Suggested Anti-PTCH1 Antibody Titration: 0.2-1 ug/ml Positive Control: Jurkat cell lysate