



[Go to Product page](#)

Datasheet for ABIN2773842
anti-C1QB antibody (C-Term)

3 Images

6 Publications

Overview

Quantity:	100 µL
Target:	C1QB
Binding Specificity:	C-Term
Reactivity:	Human, Dog, Horse
Host:	Rabbit
Clonality:	Polyclonal
Conjugate:	This C1QB antibody is un-conjugated
Application:	Western Blotting (WB), Immunohistochemistry (IHC)

Product Details

Immunogen:	The immunogen is a synthetic peptide directed towards the C terminal region of human C1QB
Sequence:	AYNTFQVTTG GMVLKLEQGE NVFLQATDKN SLLGMEGANS IFSGFLLFPD
Predicted Reactivity:	Dog: 92%, Horse: 82%, Human: 100%
Characteristics:	This is a rabbit polyclonal antibody against C1QB. It was validated on Western Blot and immunohistochemistry.
Purification:	Affinity Purified

Target Details

Target:	C1QB
Alternative Name:	C1QB (C1QB Products)

Target Details

Background: C1QB is a major constituent of the human complement subcomponent C1q. C1q associates with C1r and C1s in order to yield the first component of the serum complement system. Deficiency of C1q has been associated with lupus erythematosus and glomerulonephritis. C1q is composed of 18 polypeptide chains: six A-chains, six B-chains, and six C-chains. Each chain contains a collagen-like region located near the N terminus and a C-terminal globular region. The A-, B-, and C-chains are arranged in the order A-C-B on chromosome 1. C1QB is the B-chain polypeptide of human complement subcomponent C1q. This gene encodes a major constituent of the human complement subcomponent C1q. C1q associates with C1r and C1s in order to yield the first component of the serum complement system. Deficiency of C1q has been associated with lupus erythematosus and glomerulonephritis. C1q is composed of 18 polypeptide chains: six A-chains, six B-chains, and six C-chains. Each chain contains a collagen-like region located near the N terminus and a C-terminal globular region. The A-, B-, and C-chains are arranged in the order A-C-B on chromosome 1. This gene encodes the B-chain polypeptide of human complement subcomponent C1q.

Alias Symbols: -

Protein Interaction Partner: IL32, EED, FN1, EDA2R, RELA, MYOC, PTX3, C1R, HRG, DEFA1, C1QC, C1QA,

Protein Size: 253

Molecular Weight: 27 kDa

Gene ID: 713

NCBI Accession: [NM_000491](#), [NP_000482](#)

UniProt: [P02746](#)

Pathways: [Complement System](#)

Application Details

Application Notes: Optimal working dilutions should be determined experimentally by the investigator.

Comment: Antigen size: 253 AA

Restrictions: For Research Use only

Handling

Format: Liquid

Concentration: Lot specific

Handling

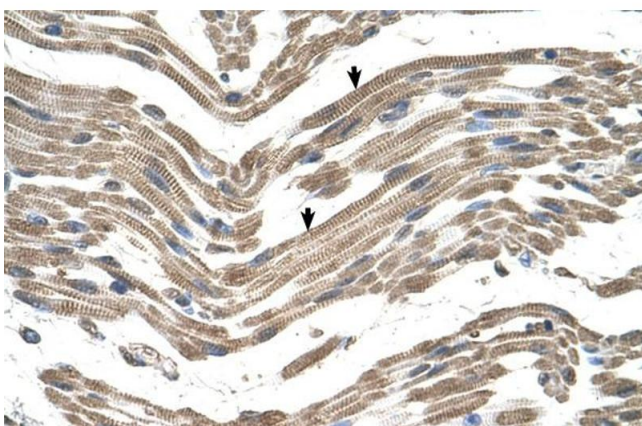
Buffer:	Liquid. Purified antibody supplied in 1x PBS buffer with 0.09 % (w/v) sodium azide and 2 % sucrose.
Preservative:	Sodium azide
Precaution of Use:	This product contains Sodium azide: a POISONOUS AND HAZARDOUS SUBSTANCE which should be handled by trained staff only.
Handling Advice:	Avoid repeated freeze-thaw cycles.
Storage:	-20 °C
Storage Comment:	For short term use, store at 2-8°C up to 1 week. For long term storage, store at -20°C in small aliquots to prevent freeze-thaw cycles.

Publications

Product cited in: Suzuki, Imoto, Pimkhaokham, Nakagawa, Kamata, Kozaki, Amagasa, Inazawa: "PRTFDC1, a possible tumor-suppressor gene, is frequently silenced in oral squamous-cell carcinomas by aberrant promoter hypermethylation." in: **Oncogene**, Vol. 26, Issue 57, pp. 7921-32, (2007) ([PubMed](#)).

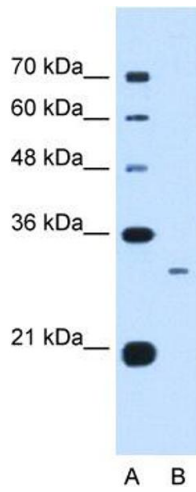
There are more publications referencing this product on: [Product page](#)

Images



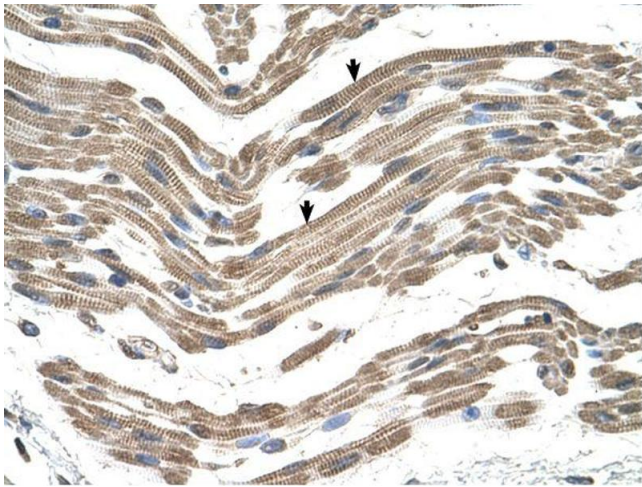
Immunohistochemistry

Image 1. Human Muscle



Western Blotting

Image 2. WB Suggested Anti-C1QB Antibody Titration:
0.5ug/ml Positive Control: Jurkat cell lysate



Immunohistochemistry

Image 3.