

Datasheet for ABIN2773845
anti-TMEM195 antibody (Middle Region)[Go to Product page](#)

1 Image

Overview

Quantity:	100 µL
Target:	TMEM195
Binding Specificity:	Middle Region
Reactivity:	Human, Rat, Mouse, Dog, Rabbit, Pig, Horse, Cow, Zebrafish (Danio rerio)
Host:	Rabbit
Clonality:	Polyclonal
Conjugate:	This TMEM195 antibody is un-conjugated
Application:	Western Blotting (WB)

Product Details

Immunogen:	The immunogen is a synthetic peptide directed towards the middle region of human TMEM195
Sequence:	AGHQTHHSSE DYNLSTALRQ SVLQIYTSWI FYSPLALFIP PSVYAVHLQF
Predicted Reactivity:	Cow: 93%, Dog: 100%, Horse: 100%, Human: 100%, Mouse: 100%, Pig: 93%, Rabbit: 100%, Rat: 100%, Zebrafish: 93%
Characteristics:	This is a rabbit polyclonal antibody against TMEM195. It was validated on Western Blot using a cell lysate as a positive control.
Purification:	Affinity Purified

Target Details

Target:	TMEM195
---------	---------

Target Details

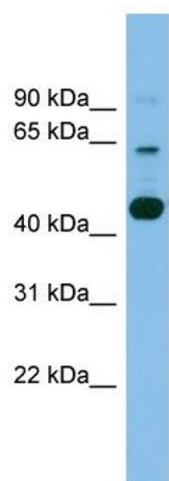
Alternative Name:	TMEM195 (TMEM195 Products)
Background:	<p>TMEM195 belongs to the TMEM195 family. It is a multi-pass membrane protein. The function of the TMEM195 protein remains.</p> <p>Alias Symbols: FLJ16237, MGC131748, TMEM195</p> <p>Protein Size: 445</p>
Molecular Weight:	51 kDa
Gene ID:	392636
NCBI Accession:	NM_001004320 , NP_001004320
UniProt:	Q6ZNB7

Application Details

Application Notes:	Optimal working dilutions should be determined experimentally by the investigator.
Comment:	Antigen size: 445 AA
Restrictions:	For Research Use only

Handling

Format:	Liquid
Concentration:	Lot specific
Buffer:	Liquid. Purified antibody supplied in 1x PBS buffer with 0.09 % (w/v) sodium azide and 2 % sucrose.
Preservative:	Sodium azide
Precaution of Use:	This product contains Sodium azide: a POISONOUS AND HAZARDOUS SUBSTANCE which should be handled by trained staff only.
Handling Advice:	Avoid repeated freeze-thaw cycles.
Storage:	-20 °C
Storage Comment:	For short term use, store at 2-8°C up to 1 week. For long term storage, store at -20°C in small aliquots to prevent freeze-thaw cycles.



Western Blotting

Image 1. WB Suggested Anti-TMEM195 Antibody Titration:
0.2-1 ug/ml ELISA Titer: 1:1562500 Positive Control:
COLO205 cell lysate