

Datasheet for ABIN2773854  
**anti-ABHD12 antibody (Middle Region)**



[Go to Product page](#)

1 Image

## Overview

|                      |   |
|----------------------|---|
| Quantity:            | 100 µL  |
| Target:              | ABHD12  |
| Binding Specificity: | Middle Region   |
| Reactivity:          | Human, Mouse, Rat, Cow, Dog, Horse, Rabbit, Guinea Pig, Saccharomyces cerevisiae, Zebrafish (Danio rerio) |
| Host:                | Rabbit  |
| Clonality:           | Polyclonal  |
| Conjugate:           | This ABHD12 antibody is un-conjugated   |
| Application:         | Western Blotting (WB)   |

## Product Details

|                       |   |
|-----------------------|---|
| Immunogen:            | The immunogen is a synthetic peptide directed towards the middle region of human ABHD12   |
| Sequence:             | CPLLILHAED DPVVPFQLGR KLYSIAAPAR SFRDFKVQFV PFHSDLGYRH  |
| Predicted Reactivity: | Cow: 100%, Dog: 100%, Guinea Pig: 100%, Horse: 100%, Human: 100%, Mouse: 93%, Rabbit: 100%, Rat: 100%, Yeast: 80%, Zebrafish: 93% |
| Characteristics:      | This is a rabbit polyclonal antibody against ABHD12. It was validated on Western Blot using a cell lysate as a positive control.  |
| Purification:         | Affinity Purified   |

## Target Details

|         |        |
|---------|--------|
| Target: | ABHD12 |
|---------|--------|

## Target Details

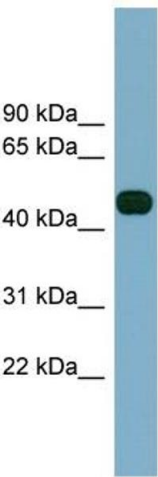
|                   |   |
|-------------------|---|
| Alternative Name: | ABHD12 ( <a href="#">ABHD12 Products</a> )  |
| Background:       | <p>ABHD12 has 2-arachidonoylglycerol hydrolase activity. ABHD12 may be a regulator of endocannabinoid signaling pathways.</p> <p>Alias Symbols: ABHD12A, BEM46L2, C20orf22, DKFZP434P106, dJ965G21.2, PHARC</p> <p>Protein Interaction Partner: SUMO1, UBC, NEDD8,</p> <p>Protein Size: 398</p> |
| Molecular Weight: | 45 kDa  |
| Gene ID:          | 26090   |
| NCBI Accession:   | <a href="#">NM_001042472</a> , <a href="#">NP_001035937</a>   |
| UniProt:          | <a href="#">Q8N2K0</a>  |

## Application Details

|                    |  |
|--------------------|--|
| Application Notes: | Optimal working dilutions should be determined experimentally by the investigator. |
| Comment:           | Antigen size: 398 AA   |
| Restrictions:      | For Research Use only  |

## Handling

|                    |   |
|--------------------|---|
| Format:            | Liquid  |
| Concentration:     | Lot specific  |
| Buffer:            | Liquid. Purified antibody supplied in 1x PBS buffer with 0.09 % (w/v) sodium azide and 2 % sucrose.                                     |
| Preservative:      | Sodium azide  |
| Precaution of Use: | This product contains Sodium azide: a POISONOUS AND HAZARDOUS SUBSTANCE which should be handled by trained staff only.                  |
| Handling Advice:   | Avoid repeated freeze-thaw cycles.  |
| Storage:           | -20 °C  |
| Storage Comment:   | For short term use, store at 2-8°C up to 1 week. For long term storage, store at -20°C in small aliquots to prevent freeze-thaw cycles. |



Western Blotting

**Image 1.** WB Suggested Anti-ABHD12 Antibody Titration:  
0.2-1 ug/ml Positive Control: Human Spleen