

Datasheet for ABIN2773864  
**anti-NR3C2 antibody (Middle Region)**

## 2 Images

[Go to Product page](#)

## Overview

Quantity:	100 µL
Target:	NR3C2
Binding Specificity:	Middle Region
Reactivity:	Human, Rat, Mouse, Horse, Cow, Pig, Rabbit, Guinea Pig
Host:	Rabbit
Clonality:	Polyclonal
Conjugate:	This NR3C2 antibody is un-conjugated
Application:	Western Blotting (WB), Immunohistochemistry (IHC)

## Product Details

Immunogen:	The immunogen is a synthetic peptide directed towards the middle region of human NR3C2
Sequence:	RRKNCPACRL QKCLQAGMNL GARKSKKLGK LKGIHEEQPQ QQQPPPPPPP
Predicted Reactivity:	Cow: 83%, Guinea Pig: 75%, Horse: 86%, Human: 100%, Mouse: 92%, Pig: 93%, Rabbit: 100%, Rat: 92%
Characteristics:	This is a rabbit polyclonal antibody against NR3C2. It was validated on Western Blot and immunohistochemistry.
Purification:	Protein A purified

## Target Details

Target:	NR3C2
---------	-------

## Target Details

Alternative Name:	NR3C2 ( <a href="#">NR3C2 Products</a> )
Background:	<p>NR3C2 is a receptor for both mineralocorticoids (MC) such as aldosterone and glucocorticoids (GC) such as corticosterone or cortisol. It binds to mineralocorticoid response elements (MRE) and transactivates target genes. The effect of MC is to increase ion and water transport and thus raise extracellular fluid volume and blood pressure and lower potassium levels.</p> <p>Alias Symbols: MCR, MGC133092, MLR, MR, NR3C2VIT</p> <p>Protein Interaction Partner: RABAC1, RXRA, HSP90AA1, ACSL1, UBC, SRC, PPP5C, PPID, FKBP5, FKBP4, STUB1, AIP, TRIM24, NRIP1, DNAJC7, CAND1, SUMO1, UBE2I, EIF3I, PROX1, PIAS1, PIAS3, HSPA4, PTGES3, AR, NR3C1, ACTA1, ACTG1,</p> <p>Protein Size: 984</p>
Molecular Weight:	107 kDa
Gene ID:	4306
NCBI Accession:	<a href="#">NM_000901</a> , <a href="#">NP_000892</a>
UniProt:	<a href="#">P08235</a>
Pathways:	<a href="#">ACE Inhibitor Pathway</a> , <a href="#">Nuclear Receptor Transcription Pathway</a> , <a href="#">Intracellular Steroid Hormone Receptor Signaling Pathway</a> , <a href="#">Steroid Hormone Mediated Signaling Pathway</a>

## Application Details

Application Notes:	Optimal working dilutions should be determined experimentally by the investigator.
Comment:	Antigen size: 984 AA
Restrictions:	For Research Use only

## Handling

Format:	Liquid
Concentration:	Lot specific
Buffer:	Liquid. Purified antibody supplied in 1x PBS buffer with 0.09 % (w/v) sodium azide and 2 % sucrose.
Preservative:	Sodium azide
Precaution of Use:	This product contains Sodium azide: a POISONOUS AND HAZARDOUS SUBSTANCE which should be handled by trained staff only.

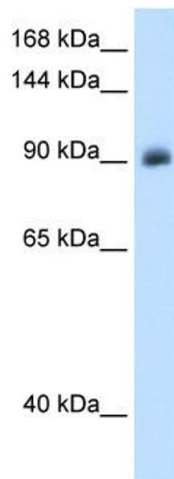
## Handling

Handling Advice: Avoid repeated freeze-thaw cycles.

Storage: -20 °C

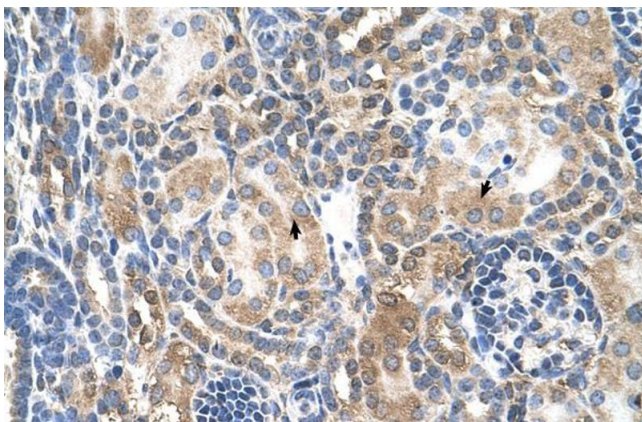
Storage Comment: For short term use, store at 2-8°C up to 1 week. For long term storage, store at -20°C in small aliquots to prevent freeze-thaw cycles.

## Images



### Western Blotting

**Image 1.** WB Suggested Anti-NR3C2 Antibody Titration: 1.25ug/ml Positive Control: A172 cell lysate NR3C2 is supported by BioGPS gene expression data to be expressed in A172



### Immunohistochemistry

**Image 2.** Human kidney