

Datasheet for ABIN2773870
anti-KRTAP23-1 antibody (Middle Region)[Go to Product page](#)

2 Images

Overview

Quantity:	100 µL
Target:	KRTAP23-1
Binding Specificity:	Middle Region
Reactivity:	Human
Host:	Rabbit
Clonality:	Polyclonal
Conjugate:	This KRTAP23-1 antibody is un-conjugated
Application:	Western Blotting (WB)

Product Details

Immunogen:	The immunogen is a synthetic peptide directed towards the middle region of human KRTAP23-1
Sequence:	CEGYLCYSGY SRGGSSYPSN LVYSTEPLIS QHLPAGFLSL QGLSGDLLGN
Predicted Reactivity:	Human: 100%
Characteristics:	This is a rabbit polyclonal antibody against KRTAP23-1. It was validated on Western Blot.
Purification:	Affinity Purified

Target Details

Target:	KRTAP23-1
Alternative Name:	KRTAP23-1 (KRTAP23-1 Products)

Target Details

Background:	<p>In the hair cortex, hair keratin intermediate filaments are embedded in an interfilamentous matrix, consisting of hair keratin-associated proteins (KRTAP), which are essential for the formation of a rigid and resistant hair shaft through their extensive disulfide bond cross-linking with abundant cysteine residues of hair keratins. The matrix proteins include the high-sulfur and high-glycine-tyrosine keratins.</p> <p>Alias Symbols: KAP23.1</p> <p>Protein Interaction Partner: RBPMS, BHLHE40,</p> <p>Protein Size: 65</p>
Molecular Weight:	7 kDa
Gene ID:	337963
NCBI Accession:	NM_181624 , NP_853655
UniProt:	A1A580

Application Details

Application Notes:	Optimal working dilutions should be determined experimentally by the investigator.
Comment:	Antigen size: 65 AA
Restrictions:	For Research Use only

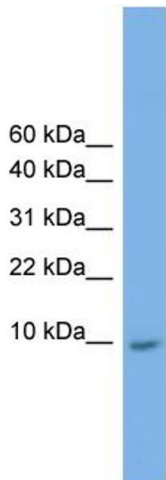
Handling

Format:	Liquid
Concentration:	Lot specific
Buffer:	Liquid. Purified antibody supplied in 1x PBS buffer with 0.09 % (w/v) sodium azide and 2 % sucrose.
Preservative:	Sodium azide
Precaution of Use:	This product contains Sodium azide: a POISONOUS AND HAZARDOUS SUBSTANCE which should be handled by trained staff only.
Handling Advice:	Avoid repeated freeze-thaw cycles.
Storage:	-20 °C
Storage Comment:	For short term use, store at 2-8°C up to 1 week. For long term storage, store at -20°C in small aliquots to prevent freeze-thaw cycles.



Western Blotting

Image 1. WB Suggested Anti-KRTAP23-1 Antibody Titration:
0.2-1 ug/ml Positive Control: HepG2 cell lysate



Rabbit Anti-KRTAP23-1 Antibody
Catalog Number: ARP45936
Lot Number: QC16034
Lane: HepG2 Cell Lysate

Antibody Titration: 1.0µg/ml
Gel Concentration: 10-20%

Western Blotting

Image 2. WB Suggested Anti-KRTAP23-1
Antibody Titration: 0.2-1 µg/mL
Positive Control: HepG2 cell lysate