

Datasheet for ABIN2773875  
**anti-DPP3 antibody (N-Term)**

## 5 Images

[Go to Product page](#)

## Overview

Quantity:	100 µL
Target:	DPP3
Binding Specificity:	N-Term
Reactivity:	Human, Mouse, Rat, Cow, Guinea Pig, Horse, Dog, Rabbit
Host:	Rabbit
Clonality:	Polyclonal
Conjugate:	This DPP3 antibody is un-conjugated
Application:	Western Blotting (WB)

## Product Details

Immunogen:	The immunogen is a synthetic peptide directed towards the N terminal region of human DPP3
Sequence:	SRAAWYGGLA VLLQTSPEAP YIYALLSRLF RAQDPDQLRQ HALAEGLTEE
Predicted Reactivity:	Cow: 100%, Dog: 93%, Guinea Pig: 100%, Horse: 100%, Human: 100%, Mouse: 100%, Rabbit: 93%, Rat: 100%
Characteristics:	This is a rabbit polyclonal antibody against DPP3. It was validated on Western Blot using a cell lysate as a positive control.
Purification:	Affinity Purified

## Target Details

Target:	DPP3
---------	------

## Target Details

Alternative Name:	DPP3 ( <a href="#">DPP3 Products</a> )
Background:	<p>DPP3 is a protein that is a member of the S9B family in clan SC of the serine proteases. This cytoplasmic protein binds a single zinc ion with its zinc-binding motif (HELLGH) and has post-proline dipeptidyl aminopeptidase activity, cleaving Xaa-Pro dipeptides from the N-termini of proteins. Increased activity of this protein is associated with endometrial and ovarian cancers. This gene encodes a protein that is a member of the S9B family in clan SC of the serine proteases. This cytoplasmic protein binds a single zinc ion with its zinc-binding motif (HELLGH) and has post-proline dipeptidyl aminopeptidase activity, cleaving Xaa-Pro dipeptides from the N-termini of proteins. Increased activity of this protein is associated with endometrial and ovarian cancers. Alternate transcriptional splice variants have been characterized.</p> <p>Alias Symbols: DPPIII, FLJ11387, FLJ22331</p> <p>Protein Interaction Partner: KEAP1, UBC, NHLRC2, TNFAIP8, NDRG1, TRIP6, SMS, SGTA, PEPD, DLD, ASS1, LIG4, APP, DSTN, TERF2IP, TINF2, POT1, TERF1, SUMO2, HSPA8, ATP5C1,</p> <p>Protein Size: 737</p>
Molecular Weight:	82 kDa
Gene ID:	10072
NCBI Accession:	<a href="#">NM_005700</a> , <a href="#">NP_005691</a>
UniProt:	<a href="#">Q9NY33</a>

## Application Details

Application Notes:	Optimal working dilutions should be determined experimentally by the investigator.
Comment:	Antigen size: 737 AA
Restrictions:	For Research Use only

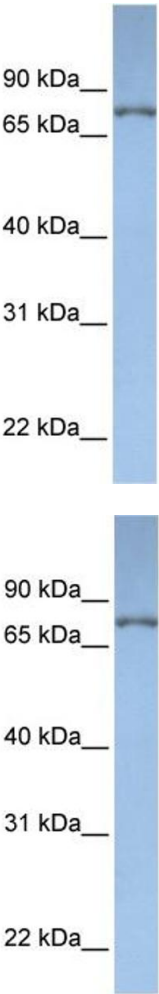
## Handling

Format:	Liquid
Concentration:	Lot specific
Buffer:	Liquid. Purified antibody supplied in 1x PBS buffer with 0.09 % (w/v) sodium azide and 2 % sucrose.
Preservative:	Sodium azide
Precaution of Use:	This product contains Sodium azide: a POISONOUS AND HAZARDOUS SUBSTANCE which

Handling

	should be handled by trained staff only.
Handling Advice:	Avoid repeated freeze-thaw cycles.
Storage:	-20 °C
Storage Comment:	For short term use, store at 2-8°C up to 1 week. For long term storage, store at -20°C in small aliquots to prevent freeze-thaw cycles.

Images

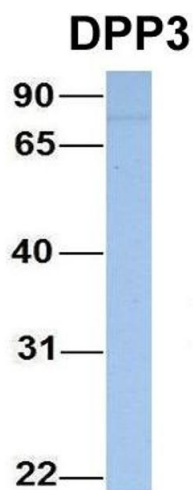


Western Blotting

**Image 1.** WB Suggested Anti-DPP3 Antibody Titration: 0.2-1 ug/ml ELISA Titer: 1:62500 Positive Control: Jurkat cell lysate DPP3 is supported by BioGPS gene expression data to be expressed in Jurkat

Western Blotting

**Image 2.** WB Suggested Anti-DPP3 Antibody Titration: 0.2-1 µg/mL ELISA Titer: 1:2500 Positive Control: Jurkat cell lysate DPP3 is supported by BioGPS gene expression data to be expressed in Jurkat



**Western Blotting**

**Image 3.** Host: Rabbit Target Name: DPP3 Sample Type: HeLa Antibody Dilution: 1.0ug/ml DPP3 is supported by BioGPS gene expression data to be expressed in HeLa

Please check the [product details page](#) for more images. Overall 5 images are available for ABIN2773875.