

Datasheet for ABIN2773877
anti-BOP1 antibody (N-Term)[Go to Product page](#)[1 Image](#)[1 Publication](#)

Overview

Quantity:	100 µL
Target:	BOP1
Binding Specificity:	N-Term
Reactivity:	Human, Mouse, Rat, Horse, Pig, Dog, Rabbit, Saccharomyces cerevisiae, Zebrafish (Danio rerio)
Host:	Rabbit
Clonality:	Polyclonal
Conjugate:	This BOP1 antibody is un-conjugated
Application:	Western Blotting (WB)

Product Details

Immunogen:	The immunogen is a synthetic peptide directed towards the N terminal region of human BOP1
Sequence:	MAGSRGAGRT AAPSVRPEKR RSEPELEPEP EPEPPLLCTS PLSHSTGSDS
Predicted Reactivity:	Dog: 100%, Horse: 100%, Human: 100%, Mouse: 100%, Pig: 100%, Rabbit: 81%, Rat: 100%, Yeast: 100%, Zebrafish: 100%
Characteristics:	This is a rabbit polyclonal antibody against BOP1. It was validated on Western Blot using a cell lysate as a positive control.
Purification:	Affinity Purified

Target Details

Target:	BOP1
---------	------

Target Details

Alternative Name:	BOP1 (BOP1 Products)
Background:	<p>BOP1 is the component of the PeBoW complex, which is required for maturation of 28S and 5.8S ribosomal RNAs and formation of the 60S ribosome.</p> <p>Alias Symbols: KIAA0124</p> <p>Protein Interaction Partner: FBXW11, UBC, SUMO1, RNF2, C18orf25, SNX5, GORASP2, UGDH, TSNAX, ME1, GTF2A1, GARS, WDR12, PES1, BOP1, NOP58, GNL3, ACIN1, NOP56, RPS7, RPL30, NOP2, NHP2L1, FBL, CAND1, CUL3, SIRT7, SUMO2, KLF10, MYBBP1A, WDR48, ARRB2, ARRB1,</p> <p>Protein Size: 746</p>
Molecular Weight:	83 kDa
Gene ID:	23246
NCBI Accession:	NM_015201 , NP_056016
UniProt:	Q14137

Application Details

Application Notes:	Optimal working dilutions should be determined experimentally by the investigator.
Comment:	Antigen size: 746 AA
Restrictions:	For Research Use only

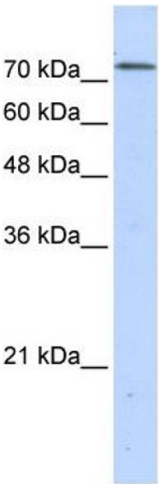
Handling

Format:	Liquid
Concentration:	Lot specific
Buffer:	Liquid. Purified antibody supplied in 1x PBS buffer with 0.09 % (w/v) sodium azide and 2 % sucrose.
Preservative:	Sodium azide
Precaution of Use:	This product contains Sodium azide: a POISONOUS AND HAZARDOUS SUBSTANCE which should be handled by trained staff only.
Handling Advice:	Avoid repeated freeze-thaw cycles.
Storage:	-20 °C
Storage Comment:	For short term use, store at 2-8°C up to 1 week. For long term storage, store at -20°C in small aliquots to prevent freeze-thaw cycles.

Publications

Product cited in: Ewing, Chu, Elisma, Li, Taylor, Climie, McBroom-Cerajewski, Robinson, OConnor, Li, Taylor, Dharsee, Ho, Heilbut, Moore, Zhang, Ornatsky, Bukhman, Ethier, Sheng, Vasilescu, Abu-Farha, Lambert, Duewel et al.: "Large-scale mapping of human protein-protein interactions by mass spectrometry. ..." in: **Molecular systems biology**, Vol. 3, pp. 89, (2007) ([PubMed](#)).

Images



Western Blotting

Image 1. WB Suggested Anti-BOP1 Antibody Titration: 0.2-1 ug/ml ELISA Titer: 1:62500 Positive Control: Transfected 293T