

Datasheet for ABIN2773886
anti-ERLIN1 antibody (N-Term)[Go to Product page](#)

3 Images

Overview

Quantity:	100 µL
Target:	ERLIN1
Binding Specificity:	N-Term
Reactivity:	Human, Mouse, Rat, Zebrafish (Danio rerio), Cow, Rabbit, Dog, Guinea Pig, Horse, Goat
Host:	Rabbit
Clonality:	Polyclonal
Conjugate:	This ERLIN1 antibody is un-conjugated
Application:	Western Blotting (WB)

Product Details

Immunogen:	The immunogen is a synthetic peptide directed towards the N terminal region of human ERLIN1
Sequence:	KNVPCGTSGG VMIYIDRIEV VNMLAPYAVF DIVRNYTADY DKTLIFNKIH
Predicted Reactivity:	Cow: 92%, Dog: 100%, Goat: 92%, Guinea Pig: 100%, Horse: 100%, Human: 100%, Mouse: 100%, Rabbit: 100%, Rat: 100%, Zebrafish: 100%
Characteristics:	This is a rabbit polyclonal antibody against ERLIN1. It was validated on Western Blot using a cell lysate as a positive control.
Purification:	Affinity Purified

Target Details

Target:	ERLIN1
---------	--------

Target Details

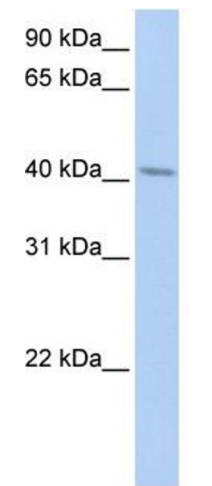
Alternative Name:	ERLIN1 (ERLIN1 Products)
Background:	<p>Erlin-1 belongs to the band 7/mec-2 family. Erlin-1 and erlin-2 are novel members of the prohibitin family of proteins that define lipid-raft-like domains of the ER.</p> <p>Alias Symbols: C10orf69, Erlin-1, KE04, KE04, RP11-316M21.1, SPFH1</p> <p>Protein Interaction Partner: AGR3, TMEM199, FA2H, SEC22A, ERLIN2, Scap, SUMO2, INSIG1, UBC, ASB11, SUZ12, ADRA1D, CFTR, CHCHD6, NDUFA12, CHMP2A, RALY, SSR3, CPT1A, FBXO6, SYVN1, RNF139, ITPR1, AMFR,</p> <p>Protein Size: 348</p>
Molecular Weight:	39 kDa
Gene ID:	10613
NCBI Accession:	NM_006459 , NP_006450
UniProt:	O75477

Application Details

Application Notes:	Optimal working dilutions should be determined experimentally by the investigator.
Comment:	Antigen size: 348 AA
Restrictions:	For Research Use only

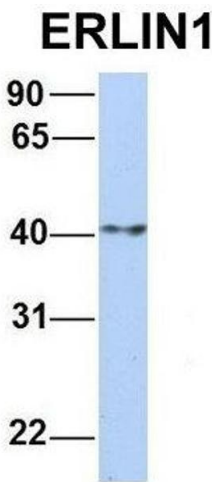
Handling

Format:	Liquid
Concentration:	Lot specific
Buffer:	Liquid. Purified antibody supplied in 1x PBS buffer with 0.09 % (w/v) sodium azide and 2 % sucrose.
Preservative:	Sodium azide
Precaution of Use:	This product contains Sodium azide: a POISONOUS AND HAZARDOUS SUBSTANCE which should be handled by trained staff only.
Handling Advice:	Avoid repeated freeze-thaw cycles.
Storage:	-20 °C
Storage Comment:	For short term use, store at 2-8°C up to 1 week. For long term storage, store at -20°C in small aliquots to prevent freeze-thaw cycles.



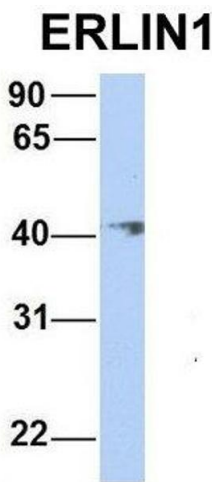
Western Blotting

Image 1. WB Suggested Anti-ERLIN1 Antibody Titration: 0.2-1 ug/ml ELISA Titer: 1:62500 Positive Control: HepG2 cell lysate ERLIN1 is strongly supported by BioGPS gene expression data to be expressed in Human HepG2 cells



Western Blotting

Image 2. Host: Rabbit Target Name: ERLIN1 Sample Type: Human MCF7 Antibody Dilution: 1.0ug/ml ERLIN1 is supported by BioGPS gene expression data to be expressed in MCF7



Western Blotting

Image 3. Host: Rabbit Target Name: ERLIN1 Sample Type: Human 721_B Antibody Dilution: 1.0ug/ml ERLIN1 is supported by BioGPS gene expression data to be expressed in 721_B