

Datasheet for ABIN2773893
anti-NSDHL antibody (Middle Region)[Go to Product page](#)

1 Image

Overview

Quantity:	100 µL
Target:	NSDHL
Binding Specificity:	Middle Region
Reactivity:	Human, Rat, Mouse, Pig, Rabbit, Cow, Dog, Zebrafish (Danio rerio), Guinea Pig, Horse
Host:	Rabbit
Clonality:	Polyclonal
Conjugate:	This NSDHL antibody is un-conjugated
Application:	Western Blotting (WB)

Product Details

Immunogen:	The immunogen is a synthetic peptide directed towards the middle region of human NSDHL
Sequence:	RAVLGANDPE KNFLTТАIRP HGIFGPRDPQ LVPILIEAAR NGKMKFVIGN
Predicted Reactivity:	Cow: 100%, Dog: 100%, Guinea Pig: 86%, Horse: 100%, Human: 100%, Mouse: 100%, Pig: 100%, Rabbit: 100%, Rat: 100%, Zebrafish: 100%
Characteristics:	This is a rabbit polyclonal antibody against NSDHL. It was validated on Western Blot using a cell lysate as a positive control.
Purification:	Protein A purified

Target Details

Target:	NSDHL
---------	-------

Target Details

Alternative Name:	NSDHL (NSDHL Products)
Background:	<p>NSDHL is localized in the endoplasmic reticulum and is involved in cholesterol biosynthesis. Mutations in NSDHL gene are associated with CHILD syndrome, which is a X-linked dominant disorder of lipid metabolism with disturbed cholesterol biosynthesis, and typically lethal in males. The protein encoded by this gene is localized in the endoplasmic reticulum and is involved in cholesterol biosynthesis. Mutations in this gene are associated with CHILD syndrome, which is a X-linked dominant disorder of lipid metabolism with disturbed cholesterol biosynthesis, and typically lethal in males. Alternatively spliced transcript variants with differing 5' UTR have been found for this gene.</p> <p>Alias Symbols: H105E3, XAP104, SDR31E1</p> <p>Protein Interaction Partner: UBC, FUS, SUMO3,</p> <p>Protein Size: 373</p>
Molecular Weight:	42 kDa
Gene ID:	50814
NCBI Accession:	NM_015922 , NP_057006
UniProt:	Q15738

Application Details

Application Notes:	Optimal working dilutions should be determined experimentally by the investigator.
Comment:	Antigen size: 373 AA
Restrictions:	For Research Use only

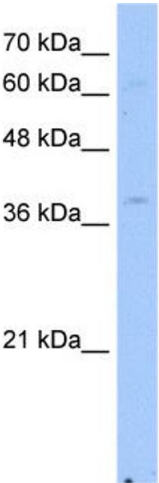
Handling

Format:	Liquid
Concentration:	Lot specific
Buffer:	Liquid. Purified antibody supplied in 1x PBS buffer with 0.09 % (w/v) sodium azide and 2 % sucrose.
Preservative:	Sodium azide
Precaution of Use:	This product contains Sodium azide: a POISONOUS AND HAZARDOUS SUBSTANCE which should be handled by trained staff only.
Handling Advice:	Avoid repeated freeze-thaw cycles.

Handling

Storage:	-20 °C
Storage Comment:	For short term use, store at 2-8°C up to 1 week. For long term storage, store at -20°C in small aliquots to prevent freeze-thaw cycles.

Images



Western Blotting

Image 1. WB Suggested Anti-NSDHL Antibody Titration: 2.5ug/ml Positive Control: HepG2 cell lysate NSDHL is strongly supported by BioGPS gene expression data to be expressed in Human HepG2 cells