



[Go to Product page](#)

Datasheet for ABIN2773908  
**anti-NDRG2 antibody (C-Term)**

3 Images

Overview

Quantity:	100 µL
Target:	NDRG2
Binding Specificity:	C-Term
Reactivity:	Human, Rat, Mouse, Cow, Pig, Dog, Horse, Guinea Pig, Rabbit
Host:	Rabbit
Clonality:	Polyclonal
Conjugate:	This NDRG2 antibody is un-conjugated
Application:	Western Blotting (WB), Immunohistochemistry (IHC)

Product Details

Immunogen:	The immunogen is a synthetic peptide directed towards the C terminal region of human NDRG2
Sequence:	GYMASSCMTR LSRRTASLT SAASVDGNRS RSRTLQSSE SGTLLSSGPPG
Predicted Reactivity:	Cow: 100%, Dog: 93%, Guinea Pig: 93%, Horse: 100%, Human: 100%, Mouse: 100%, Pig: 100%, Rabbit: 100%, Rat: 100%
Characteristics:	This is a rabbit polyclonal antibody against NDRG2. It was validated on Western Blot using a cell lysate as a positive control.
Purification:	Affinity Purified

Target Details

Target:	NDRG2
---------	-------

## Target Details

---

Alternative Name: [NDRG2 \(NDRG2 Products\)](#)

Background: NDRG2's gene is a member of the N-myc downregulated gene family which belongs to the alpha/beta hydrolase superfamily. NDRG2 is a cytoplasmic protein that may play a role in neurite outgrowth. Its gene may be involved in glioblastoma carcinogenesis. This gene is a member of the N-myc downregulated gene family which belongs to the alpha/beta hydrolase superfamily. The protein encoded by this gene is a cytoplasmic protein that may play a role in neurite outgrowth. This gene may be involved in glioblastoma carcinogenesis. Several alternatively spliced transcript variants of this gene have been described, but the full-length nature of some of these variants has not been determined.

Alias Symbols: DKFZp781G1938, FLJ25522, KIAA1248, SYLD

Protein Interaction Partner: CLN8, ATP1B1,

Protein Size: 357

Molecular Weight: 39 kDa

Gene ID: 57447

NCBI Accession: [NM\\_016250](#), [NP\\_057334](#)

UniProt: [Q9UN36](#)

## Application Details

---

Application Notes: Optimal working dilutions should be determined experimentally by the investigator.

Comment: Antigen size: 357 AA

Restrictions: For Research Use only

## Handling

---

Format: Liquid

Concentration: Lot specific

Buffer: Liquid. Purified antibody supplied in 1x PBS buffer with 0.09 % (w/v) sodium azide and 2 % sucrose.

Preservative: Sodium azide

Precaution of Use: This product contains Sodium azide: a POISONOUS AND HAZARDOUS SUBSTANCE which should be handled by trained staff only.

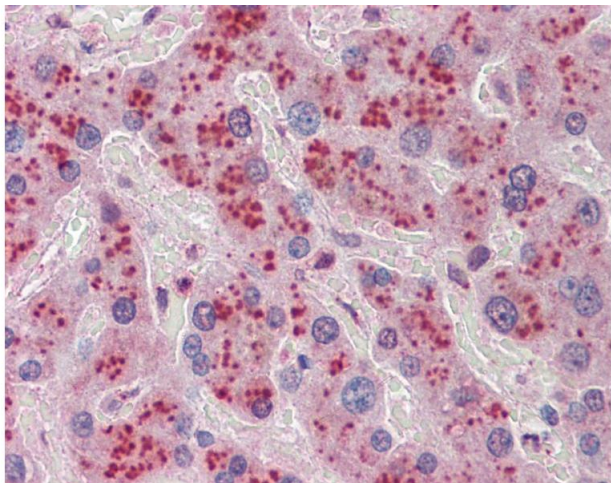
Handling Advice: Avoid repeated freeze-thaw cycles.

## Handling

Storage: -20 °C

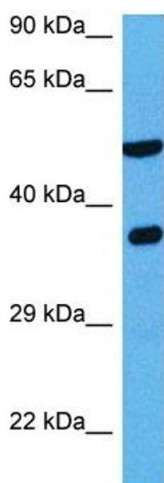
Storage Comment: For short term use, store at 2-8°C up to 1 week. For long term storage, store at -20°C in small aliquots to prevent freeze-thaw cycles.

## Images



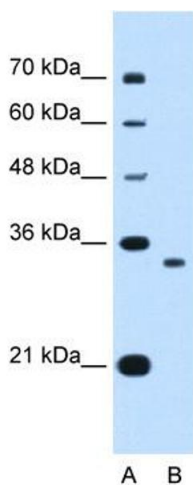
### Immunohistochemistry

**Image 1.**



### Western Blotting

**Image 2.** Host: Rabbit Target Name: NDRG2 Sample Tissue: Mouse Liver Antibody Dilution: 1ug/ml



### Western Blotting

**Image 3.** WB Suggested Anti-NDRG2 Antibody Titration: 0.2-1 ug/ml Positive Control: HepG2 cell lysate