

Datasheet for ABIN2773910
anti-ST14 antibody (C-Term)

3 Images

1 Publication

[Go to Product page](#)

Overview

Quantity:	100 µL
Target:	ST14
Binding Specificity:	C-Term
Reactivity:	Human, Mouse, Rat, Cow, Guinea Pig, Horse, Dog, Pig, Rabbit
Host:	Rabbit
Clonality:	Polyclonal
Conjugate:	This ST14 antibody is un-conjugated
Application:	Western Blotting (WB), Immunohistochemistry (IHC)

Product Details

Immunogen:	The immunogen is a synthetic peptide directed towards the C terminal region of human ST14
Sequence:	SHVFPAGKAI WVTGWGHTQY GGTGALILQK GEIRVINQTT CENLLPQQIT
Predicted Reactivity:	Cow: 100%, Dog: 93%, Guinea Pig: 93%, Horse: 100%, Human: 100%, Mouse: 100%, Pig: 100%, Rabbit: 93%, Rat: 100%
Characteristics:	This is a rabbit polyclonal antibody against ST14. It was validated on Western Blot and immunohistochemistry.
Purification:	Affinity Purified

Target Details

Target:	ST14
---------	------

Target Details

Alternative Name:	ST14 (ST14 Products)
Background:	<p>ST14 is an epithelial-derived, integral membrane serine protease. This protease forms a complex with the Kunitz-type serine protease inhibitor, HAI-1, and is found to be activated by sphingosine 1-phosphate. This protease has been shown to cleave and activate hepatocyte growth factor/scattering factor, and urokinase plasminogen activator, which suggest the function of this protease as an epithelial membrane activator for other proteases and latent growth factors. The expression of this protease has been associated with breast, colon, prostate, and ovarian tumors, which implicates its role in cancer invasion, and metastasis.</p> <p>Alias Symbols: HAI, MT-SP1, MTSP-1, MTSP1, PRSS14, SNC19, TADG-15, TADG15, TMPRSS14</p> <p>Protein Interaction Partner: UBC, RGS16, PDGFC, CDCP1, SPINT1, F2RL1, PLAU, HGF,</p> <p>Protein Size: 855</p>
Molecular Weight:	95 kDa
Gene ID:	6768
NCBI Accession:	NM_021978
UniProt:	Q9Y5Y6

Application Details

Application Notes:	Optimal working dilutions should be determined experimentally by the investigator.
Comment:	Antigen size: 855 AA
Restrictions:	For Research Use only

Handling

Format:	Liquid
Concentration:	Lot specific
Buffer:	Liquid. Purified antibody supplied in 1x PBS buffer with 0.09 % (w/v) sodium azide and 2 % sucrose.
Preservative:	Sodium azide
Precaution of Use:	This product contains Sodium azide: a POISONOUS AND HAZARDOUS SUBSTANCE which should be handled by trained staff only.
Handling Advice:	Avoid repeated freeze-thaw cycles.

Handling

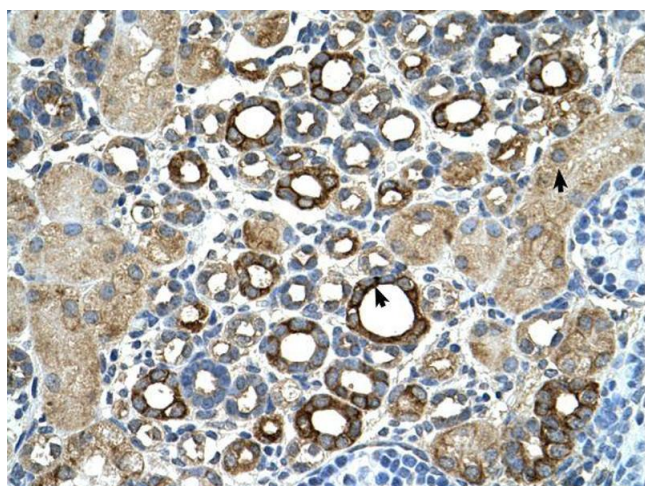
Storage: -20 °C

Storage Comment: For short term use, store at 2-8°C up to 1 week. For long term storage, store at -20°C in small aliquots to prevent freeze-thaw cycles.

Publications

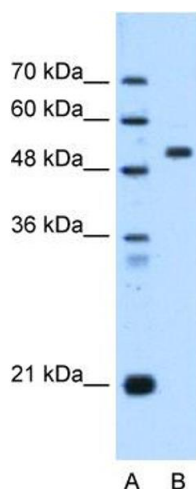
Product cited in: Gerhard, Wagner, Feingold, Shenmen, Grouse, Schuler, Klein, Old, Rasooly, Good, Guyer, Peck, Derge, Lipman, Collins, Jang, Sherry, Feolo, Misquitta, Lee, Rotmistrovsky, Greenhut, Schaefer, Buetow et al.: "The status, quality, and expansion of the NIH full-length cDNA project: the Mammalian Gene Collection (MGC). ..." in: **Genome research**, Vol. 14, Issue 10B, pp. 2121-7, (2004) ([PubMed](#)).

Images



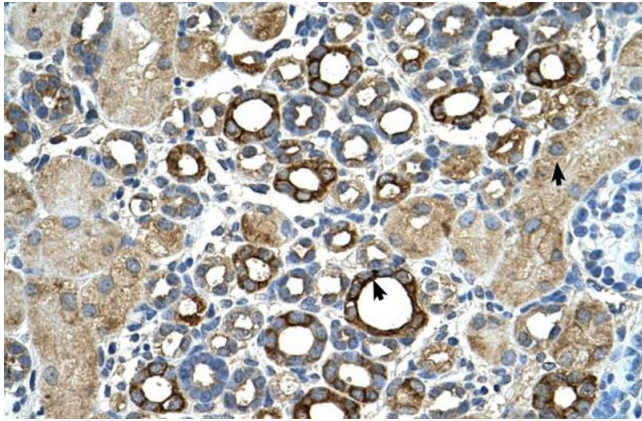
Immunohistochemistry

Image 1.



Western Blotting

Image 2. WB Suggested Anti-ST14 Antibody Titration: 0.25ug/ml Positive Control: DLD1 cell lysate ST14 is strongly supported by BioGPS gene expression data to be expressed in Human DLD1 cells



Immunohistochemistry

Image 3. Human kidney