

Datasheet for ABIN2773916

anti-Peroxiredoxin 6 antibody (Middle Region)[Go to Product page](#)**2** Images

Overview

Quantity:	100 µL
Target:	Peroxiredoxin 6 (PRDX6)
Binding Specificity:	Middle Region
Reactivity:	Human, Mouse, Rat, Cow, Guinea Pig, Horse, Rabbit, Dog, Zebrafish (Danio rerio), Sheep
Host:	Rabbit
Clonality:	Polyclonal
Conjugate:	This Peroxiredoxin 6 antibody is un-conjugated
Application:	Western Blotting (WB)

Product Details

Immunogen:	The immunogen is a synthetic peptide directed towards the middle region of human PRDX6
Sequence:	ARVVFVFGPD KKLKLSILYP ATTGRNFDEI LRVVISLQLT AEKRVATPVD
Predicted Reactivity:	Cow: 100%, Dog: 100%, Guinea Pig: 100%, Horse: 100%, Human: 100%, Mouse: 100%, Rabbit: 100%, Rat: 100%, Sheep: 100%, Zebrafish: 100%
Characteristics:	This is a rabbit polyclonal antibody against PRDX6. It was validated on Western Blot using a cell lysate as a positive control.
Purification:	Protein A purified

Target Details

Target:	Peroxiredoxin 6 (PRDX6)
---------	-------------------------

Target Details

Alternative Name:	PRDX6 (PRDX6 Products)
Background:	<p>PRDX6 is a member of the thiol-specific antioxidant protein family. This protein is a bifunctional enzyme with two distinct active sites. It is involved in redox regulation of the cell, it can reduce H₂O₂ and short chain organic, fatty acid, and phospholipid hydroperoxides. It may play a role in the regulation of phospholipid turnover as well as in protection against oxidative injury. The protein encoded by this gene is a member of the thiol-specific antioxidant protein family. This protein is a bifunctional enzyme with two distinct active sites. It is involved in redox regulation of the cell, it can reduce H₂O₂ and short chain organic, fatty acid, and phospholipid hydroperoxides. It may play a role in the regulation of phospholipid turnover as well as in protection against oxidative injury. Publication Note: This RefSeq record includes a subset of the publications that are available for this gene. Please see the Entrez Gene record to access additional publications.</p> <p>Alias Symbols: 1-Cys, AOP2, KIAA0106, MGC46173, NSGPx, PRX, aiPLA2, p29</p> <p>Protein Interaction Partner: HUWE1, CASP10, CASP8, STAU1, UBC, NEDD8, MDM2, ASB12, ASB3, NPM1, CDK2, PRDX6, VCAM1, ORM2, ITGA4, NR4A1, GPX4, FN1, PAXIP1, TMEM189, NIT2, SSU72, TIMM9, PRDX5, TMED10, C11orf58, PITRM1, SUCLG2, TPI1, PRDX2, RDX, RANGAP1, PKM, PFAS, PRDX1, MDH1, ATP6V1A,</p> <p>Protein Size: 224</p>
Molecular Weight:	25 kDa
Gene ID:	9588
NCBI Accession:	NM_004905 , NP_004896
UniProt:	P30041

Application Details

Application Notes:	Optimal working dilutions should be determined experimentally by the investigator.
Comment:	Antigen size: 224 AA
Restrictions:	For Research Use only

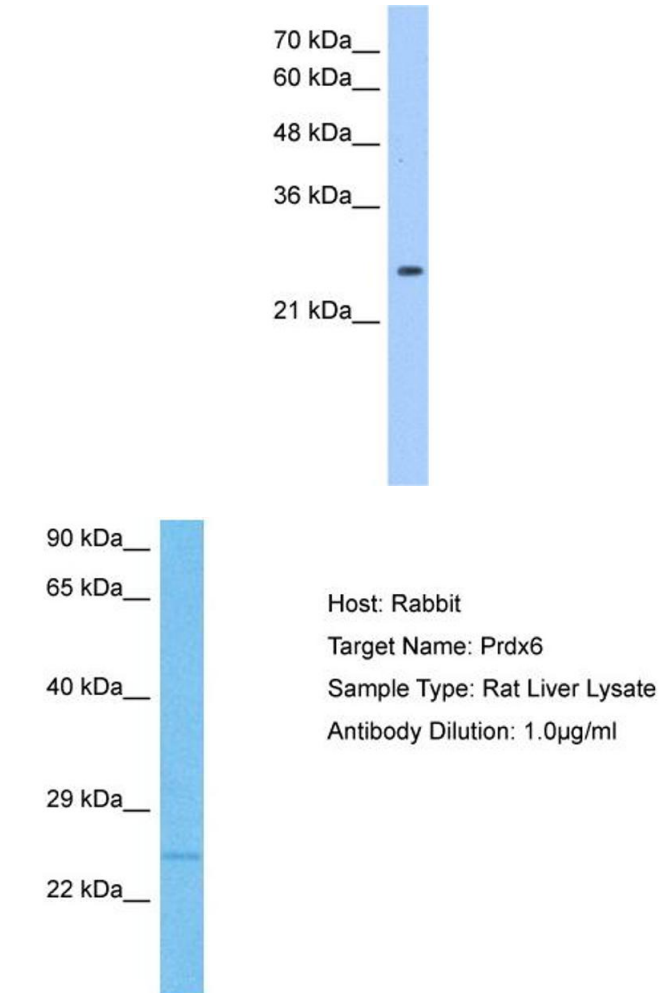
Handling

Format:	Liquid
Concentration:	Lot specific
Buffer:	Liquid. Purified antibody supplied in 1x PBS buffer with 0.09 % (w/v) sodium azide and 2 %

Handling

	sucrose.
Preservative:	Sodium azide
Precaution of Use:	This product contains Sodium azide: a POISONOUS AND HAZARDOUS SUBSTANCE which should be handled by trained staff only.
Handling Advice:	Avoid repeated freeze-thaw cycles.
Storage:	-20 °C
Storage Comment:	For short term use, store at 2-8°C up to 1 week. For long term storage, store at -20°C in small aliquots to prevent freeze-thaw cycles.

Images



Western Blotting

Image 1. WB Suggested Anti-PRDX6 Antibody Titration: 1.25ug/ml Positive Control: HepG2 cell lysate PRDX6 is strongly supported by BioGPS gene expression data to be expressed in Human HepG2 cells

Western Blotting

Image 2. Host: Rat Target Name: PRDX6 Sample Tissue: Rat Liver Antibody Dilution: 1ug/ml