

Datasheet for ABIN2773917
anti-CAP1 antibody (Middle Region)[Go to Product page](#)

2 Images

Overview

Quantity:	100 µL
Target:	CAP1
Binding Specificity:	Middle Region
Reactivity:	Human, Mouse, Rat, Horse, Cow, Dog, Guinea Pig, Rabbit, Saccharomyces cerevisiae
Host:	Rabbit
Clonality:	Polyclonal
Conjugate:	This CAP1 antibody is un-conjugated
Application:	Western Blotting (WB), Immunohistochemistry (IHC)

Product Details

Immunogen:	The immunogen is a synthetic peptide directed towards the middle region of human CAP1
Sequence:	KAQSGPVRSG PKPFSAPKPQ TSPSPKRATK KEPAVLELEG KKWRVENQEN
Predicted Reactivity:	Cow: 92%, Dog: 100%, Guinea Pig: 100%, Horse: 100%, Human: 100%, Mouse: 100%, Rabbit: 100%, Rat: 100%, Yeast: 75%
Characteristics:	This is a rabbit polyclonal antibody against CAP1. It was validated on Western Blot using a cell lysate as a positive control.
Purification:	Affinity Purified

Target Details

Target:	CAP1
---------	------

Target Details

Alternative Name:	CAP1 (CAP1 Products)
Background:	<p>The protein encoded by this gene is related to the <i>S. cerevisiae</i> CAP protein, which is involved in the cyclic AMP pathway. The human protein is able to interact with other molecules of the same protein, as well as with CAP2 and actin. Alternatively splice</p> <p>Alias Symbols: CAP, CAP1-PEN</p> <p>Protein Interaction Partner: PLA2G4A, UBC, MCM4, MCM3, MCM2, HSP90AB1, HSP90AA1, FASN, ACTBL2, NEK9, KIAA1598, SIRT1, MGEA5, ABI2, HSP90B1, TPM4, TPM3, MCM6, MCM5, FN1, ATF2, FMNL1, LIG4, BARD1, HTRA2, MYL12A, PSME2, NCK2, EFNB1, MYOC, SIRT7, UCHL5, CAP2, CAP1, SERPINB8, ACTB, Bag6,</p> <p>Protein Size: 475</p>
Molecular Weight:	52 kDa
Gene ID:	10487
NCBI Accession:	NM_006367 , NP_006358
UniProt:	Q01518
Pathways:	cAMP Metabolic Process

Application Details

Application Notes:	Optimal working dilutions should be determined experimentally by the investigator.
Comment:	Antigen size: 475 AA
Restrictions:	For Research Use only

Handling

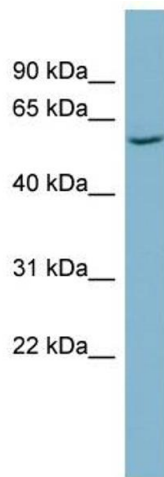
Format:	Liquid
Concentration:	Lot specific
Buffer:	Liquid. Purified antibody supplied in 1x PBS buffer with 0.09 % (w/v) sodium azide and 2 % sucrose.
Preservative:	Sodium azide
Precaution of Use:	This product contains Sodium azide: a POISONOUS AND HAZARDOUS SUBSTANCE which should be handled by trained staff only.
Handling Advice:	Avoid repeated freeze-thaw cycles.

Handling

Storage: -20 °C

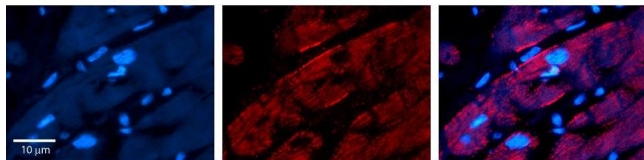
Storage Comment: For short term use, store at 2-8°C up to 1 week. For long term storage, store at -20°C in small aliquots to prevent freeze-thaw cycles.

Images



Western Blotting

Image 1. WB Suggested Anti-CAP1 Antibody Titration: 0.2-1 ug/ml ELISA Titer: 1:1562500 Positive Control: THP-1 cell lysate



Immunohistochemistry

Image 2. Rabbit Anti-CAP1 Antibody Formalin Fixed Paraffin Embedded Tissue: Human heart Tissue Observed Staining: Plasma membrane Primary Antibody Concentration: N/A Other Working Concentrations: 1:600 Secondary Antibody: Donkey anti-Rabbit-Cy3 Secondary Antibody Concentration: 1:200 Magnification: 20X Exposure Time: 0.5 - 2.0 sec