

Datasheet for ABIN2773928  
**anti-RSF1 antibody (Middle Region)**[Go to Product page](#)

## 1 Image

## Overview

Quantity:	100 µL
Target:	RSF1
Binding Specificity:	Middle Region
Reactivity:	Human, Mouse, Rat, Cow, Dog, Horse, Pig, Rabbit, Guinea Pig
Host:	Rabbit
Clonality:	Polyclonal
Conjugate:	This RSF1 antibody is un-conjugated
Application:	Western Blotting (WB)

## Product Details

Immunogen:	The immunogen is a synthetic peptide directed towards the middle region of human RSF1
Sequence:	QDEFVSDEN PDESEEDPPS NDDSDTDFCS RRLRRHPSRP MRQSRRLRRK
Predicted Reactivity:	Cow: 100%, Dog: 100%, Guinea Pig: 93%, Horse: 100%, Human: 100%, Mouse: 93%, Pig: 100%, Rabbit: 100%, Rat: 93%
Characteristics:	This is a rabbit polyclonal antibody against RSF1. It was validated on Western Blot using a cell lysate as a positive control.
Purification:	Affinity Purified

## Target Details

Target:	RSF1
---------	------

## Target Details

Alternative Name:	RSF1 ( <a href="#">RSF1 Products</a> )
Background:	<p>RSF1 (HBXAP) is involved in transcription repression, transcription coactivation when associated with hepatitis B virus X protein (HBX), and chromatin remodeling and spacing when associated with SNF2H. HBXAP is involved in transcription repression, transcription coactivation when associated with hepatitis B virus X protein (HBX), and chromatin remodeling and spacing when associated with SNF2H (MIM 603375). [supplied by OMIM]. Publication Note: This RefSeq record includes a subset of the publications that are available for this gene. Please see the Entrez Gene record to access additional publications.</p> <p>Alias Symbols: HBXAP, RSF-1, XAP8, p325</p> <p>Protein Interaction Partner: SUMO2, SUMO3, SUMO1, SMARCA5, CSNK2A1, Dlg4, UBC, COPS6, SIRT7, SP1, CENPA, NFKB1, HBVgp3,</p> <p>Protein Size: 1441</p>
Molecular Weight:	164 kDa
Gene ID:	51773
NCBI Accession:	<a href="#">NM_016578</a> , <a href="#">NP_057662</a>
UniProt:	<a href="#">Q96T23</a>

## Application Details

Application Notes:	Optimal working dilutions should be determined experimentally by the investigator.
Comment:	Antigen size: 1441 AA
Restrictions:	For Research Use only

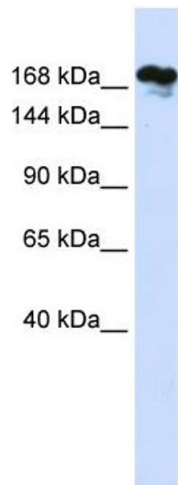
## Handling

Format:	Liquid
Concentration:	Lot specific
Buffer:	Liquid. Purified antibody supplied in 1x PBS buffer with 0.09 % (w/v) sodium azide and 2 % sucrose.
Preservative:	Sodium azide
Precaution of Use:	This product contains Sodium azide: a POISONOUS AND HAZARDOUS SUBSTANCE which should be handled by trained staff only.
Handling Advice:	Avoid repeated freeze-thaw cycles.

Handling

Storage:	-20 °C
Storage Comment:	For short term use, store at 2-8°C up to 1 week. For long term storage, store at -20°C in small aliquots to prevent freeze-thaw cycles.

Images



Western Blotting

**Image 1.** WB Suggested Anti-RSF1 Antibody Titration: 0.2-1 ug/ml ELISA Titer: 1:12500 Positive Control: Human Lung