

Datasheet for ABIN2773930

anti-PRTFDC1 antibody (Middle Region)[Go to Product page](#)**1** Image**1** Publication

Overview

Quantity:	100 µL
Target:	PRTFDC1
Binding Specificity:	Middle Region
Reactivity:	Human, Rat, Pig, Horse, Rabbit, Dog, Zebrafish (Danio rerio)
Host:	Rabbit
Clonality:	Polyclonal
Conjugate:	This PRTFDC1 antibody is un-conjugated
Application:	Western Blotting (WB)

Product Details

Immunogen:	The immunogen is a synthetic peptide directed towards the middle region of human PRTFDC1
Sequence:	MKALLSNIEK YKPNMIKVAS LLVKRTSRSD GFRPDYAGFE IPNLFVVGYA
Predicted Reactivity:	Dog: 92%, Horse: 100%, Human: 100%, Pig: 100%, Rabbit: 77%, Rat: 92%, Zebrafish: 77%
Characteristics:	This is a rabbit polyclonal antibody against PRTFDC1. It was validated on Western Blot using a cell lysate as a positive control.
Purification:	Affinity Purified

Target Details

Target:	PRTFDC1
Alternative Name:	PRTFDC1 (PRTFDC1 Products)

Target Details

Background:	<p>PRTFDC1 belongs to the purine/pyrimidine phosphoribosyltransferase family. Epigenetic silencing of PRTFDC1 by hypermethylation of the CpG islands leads to a loss of PRTFDC1 function, which might be involved in squamous cell oral carcinogenesis.</p> <p>Alias Symbols: FLJ11888, HHGP</p> <p>Protein Interaction Partner: LGALS9B, EEF2KMT, MCMBP, GNPDA1, EPM2AIP1, TCL1A, HPRT1, UBC, RTN3, FLAD1, NIF3L1, DTNB, STAT5A, EWSR1,</p> <p>Protein Size: 225</p>
Molecular Weight:	26 kDa
Gene ID:	56952
NCBI Accession:	NM_020200 , NP_064585
UniProt:	Q9NRG1
Pathways:	Ribonucleoside Biosynthetic Process

Application Details

Application Notes:	Optimal working dilutions should be determined experimentally by the investigator.
Comment:	Antigen size: 225 AA
Restrictions:	For Research Use only

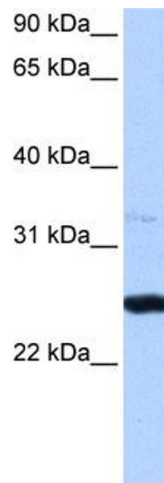
Handling

Format:	Liquid
Concentration:	Lot specific
Buffer:	Liquid. Purified antibody supplied in 1x PBS buffer with 0.09 % (w/v) sodium azide and 2 % sucrose.
Preservative:	Sodium azide
Precaution of Use:	This product contains Sodium azide: a POISONOUS AND HAZARDOUS SUBSTANCE which should be handled by trained staff only.
Handling Advice:	Avoid repeated freeze-thaw cycles.
Storage:	-20 °C
Storage Comment:	For short term use, store at 2-8°C up to 1 week. For long term storage, store at -20°C in small aliquots to prevent freeze-thaw cycles.

Publications

Product cited in: Suzuki, Imoto, Pimkhaokham, Nakagawa, Kamata, Kozaki, Amagasa, Inazawa: "PRTFDC1, a possible tumor-suppressor gene, is frequently silenced in oral squamous-cell carcinomas by aberrant promoter hypermethylation." in: **Oncogene**, Vol. 26, Issue 57, pp. 7921-32, (2007) ([PubMed](#)).

Images



Western Blotting

Image 1. WB Suggested Anti-PRTFDC1 Antibody Titration:
0.2-1 ug/ml Positive Control: HepG2 cell lysate