



[Go to Product page](#)

Datasheet for ABIN2773934  
**anti-MTFMT antibody (C-Term)**

1 Image

Overview

Quantity:	100 µL
Target:	MTFMT
Binding Specificity:	C-Term
Reactivity:	Human, Mouse, Rabbit, Rat, Cow, Dog, Guinea Pig
Host:	Rabbit
Clonality:	Polyclonal
Conjugate:	This MTFMT antibody is un-conjugated
Application:	Western Blotting (WB)

Product Details

Immunogen:	The immunogen is a synthetic peptide directed towards the C terminal region of human MTFMT
Sequence:	SVMLKKSLTA TDFYNGYLHP WYQKNSQAQP SQCRFQTLRL PTKKKQKKTV
Predicted Reactivity:	Cow: 92%, Dog: 93%, Guinea Pig: 100%, Human: 100%, Mouse: 83%, Rabbit: 79%, Rat: 86%
Characteristics:	This is a rabbit polyclonal antibody against MTFMT. It was validated on Western Blot.
Purification:	Affinity Purified

Target Details

Target:	MTFMT
Alternative Name:	MTFMT ( <a href="#">MTFMT Products</a> )

## Target Details

---

Background:	MTFMT formylates methionyl-tRNA in mitochondria. A single tRNA(Met) gene gives rise to both an initiator and an elongator species via an unknown mechanism. Alias Symbols: FMT1 Protein Interaction Partner: APP, ELAVL1, Protein Size: 304
Molecular Weight:	34 kDa
Gene ID:	123263
NCBI Accession:	<a href="#">NM_139242</a> , <a href="#">NP_640335</a>
UniProt:	<a href="#">Q96DP5</a>

## Application Details

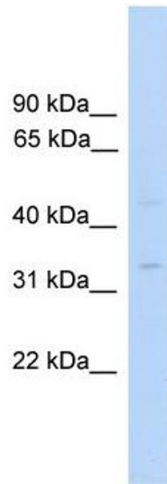
---

Application Notes:	Optimal working dilutions should be determined experimentally by the investigator.
Comment:	Antigen size: 304 AA
Restrictions:	For Research Use only

## Handling

---

Format:	Liquid
Concentration:	Lot specific
Buffer:	Liquid. Purified antibody supplied in 1x PBS buffer with 0.09 % (w/v) sodium azide and 2 % sucrose.
Preservative:	Sodium azide
Precaution of Use:	This product contains Sodium azide: a POISONOUS AND HAZARDOUS SUBSTANCE which should be handled by trained staff only.
Handling Advice:	Avoid repeated freeze-thaw cycles.
Storage:	-20 °C
Storage Comment:	For short term use, store at 2-8°C up to 1 week. For long term storage, store at -20°C in small aliquots to prevent freeze-thaw cycles.



### Western Blotting

**Image 1.** WB Suggested Anti-MTFMT Antibody Titration:  
0.2-1 ug/ml ELISA Titer: 1:1562500 Positive Control:  
Human Liver