



Datasheet for ABIN2773940
anti-C20ORF24 antibody (N-Term)



[Go to Product page](#)

1 Image

1 Publication

Overview

Quantity:	100 µL
Target:	C20ORF24
Binding Specificity:	N-Term
Reactivity:	Human, Mouse, Rat, Rabbit, Dog, Horse, Cow, Saccharomyces cerevisiae, Guinea Pig
Host:	Rabbit
Clonality:	Polyclonal
Conjugate:	This C20ORF24 antibody is un-conjugated
Application:	Western Blotting (WB)

Product Details

Immunogen:	The immunogen is a synthetic peptide directed towards the N terminal region of human C20orf24
Sequence:	MSGGRRKEEP PQQPLANGAL KVSVWSKVL R SDAAWEDKDE FLDVIYWFRQ
Predicted Reactivity:	Cow: 86%, Dog: 100%, Guinea Pig: 93%, Horse: 100%, Human: 100%, Mouse: 100%, Rabbit: 100%, Rat: 100%, Yeast: 90%
Characteristics:	This is a rabbit polyclonal antibody against C20orf24. It was validated on Western Blot using a cell lysate as a positive control.
Purification:	Protein A purified

Target Details

Target:	C20ORF24
---------	----------

Target Details

Alternative Name:	C20orf24 (C20ORF24 Products)
Background:	The function remain unknown. Alias Symbols: PNAS-11, RIP5 Protein Interaction Partner: UBC, env, FAR1, ATAD3B, FANCI, ATAD3A, PTPLAD1, IPO11, TNPO3, XPO7, GCN1L1, CLPX, SPTLC1, AIFM1, RFXANK, SLC25A12, SURF4, SSR4, SSR3, ABCD3, PSMD3, DYNC1H1, DDX3X, Protein Size: 129
Molecular Weight:	15 kDa
Gene ID:	55969
NCBI Accession:	NM_018840 , NP_061328

Application Details

Application Notes:	Optimal working dilutions should be determined experimentally by the investigator.
Comment:	Antigen size: 129 AA
Restrictions:	For Research Use only

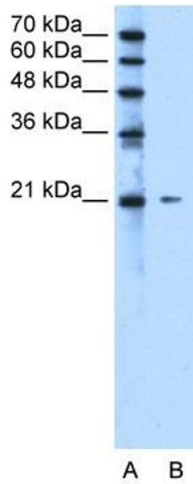
Handling

Format:	Liquid
Concentration:	Lot specific
Buffer:	Liquid. Purified antibody supplied in 1x PBS buffer with 0.09 % (w/v) sodium azide and 2 % sucrose.
Preservative:	Sodium azide
Precaution of Use:	This product contains Sodium azide: a POISONOUS AND HAZARDOUS SUBSTANCE which should be handled by trained staff only.
Handling Advice:	Avoid repeated freeze-thaw cycles.
Storage:	-20 °C
Storage Comment:	For short term use, store at 2-8°C up to 1 week. For long term storage, store at -20°C in small aliquots to prevent freeze-thaw cycles.

Publications

Product cited in: Ewing, Chu, Elisma, Li, Taylor, Climie, McBroom-Cerajewski, Robinson, OConnor, Li, Taylor, Dharsee, Ho, Heilbut, Moore, Zhang, Ornatsky, Bukhman, Ethier, Sheng, Vasilescu, Abu-Farha, Lambert, Duewel et al.: "Large-scale mapping of human protein-protein interactions by mass spectrometry. ..." in: **Molecular systems biology**, Vol. 3, pp. 89, (2007) ([PubMed](#)).

Images



Western Blotting

Image 1. WB Suggested Anti-C20orf24 Antibody Titration:
2.5ug/ml Positive Control: Jurkat cell lysate