

Datasheet for ABIN2773947
anti-LASS1 antibody (Middle Region)[Go to Product page](#)

1 Image

Overview

Quantity:	100 µL
Target:	LASS1 (CERS1)
Binding Specificity:	Middle Region
Reactivity:	Human, Mouse, Rat, Horse
Host:	Rabbit
Clonality:	Polyclonal
Conjugate:	This LASS1 antibody is un-conjugated
Application:	Western Blotting (WB)

Product Details

Immunogen:	The immunogen is a synthetic peptide directed towards the middle region of human LASS1
Sequence:	LYIVAFAAKV LTGQVHELKD LREYDTAEAQ SLKPSKAEKP LRNGLVKDKR
Predicted Reactivity:	Horse: 100%, Human: 100%, Mouse: 100%, Rat: 100%
Characteristics:	This is a rabbit polyclonal antibody against LASS1. It was validated on Western Blot using a cell lysate as a positive control.
Purification:	Affinity Purified

Target Details

Target:	LASS1 (CERS1)
Alternative Name:	LASS1 (CERS1 Products)

Target Details

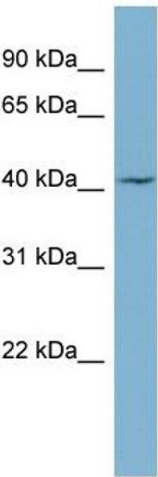
Background:	<p>This gene encodes a member of the bone morphogenetic protein (BMP) family and the TGF-beta superfamily. This group of proteins is characterized by a polybasic proteolytic processing site that is cleaved to produce a mature protein containing seven conserv</p> <p>Alias Symbols: CerS1, LAG1, MGC90349, UOG1, LASS1</p> <p>Protein Interaction Partner: UBC, MAPK6,</p> <p>Protein Size: 350</p>
Molecular Weight:	39 kDa
Gene ID:	10715
NCBI Accession:	NM_021267 , NP_067090
UniProt:	P27544

Application Details

Application Notes:	Optimal working dilutions should be determined experimentally by the investigator.
Comment:	Antigen size: 350 AA
Restrictions:	For Research Use only

Handling

Format:	Liquid
Concentration:	Lot specific
Buffer:	Liquid. Purified antibody supplied in 1x PBS buffer with 0.09 % (w/v) sodium azide and 2 % sucrose.
Preservative:	Sodium azide
Precaution of Use:	This product contains Sodium azide: a POISONOUS AND HAZARDOUS SUBSTANCE which should be handled by trained staff only.
Handling Advice:	Avoid repeated freeze-thaw cycles.
Storage:	-20 °C
Storage Comment:	For short term use, store at 2-8°C up to 1 week. For long term storage, store at -20°C in small aliquots to prevent freeze-thaw cycles.



Western Blotting

Image 1. WB Suggested Anti-LASS1 Antibody Titration:
0.2-1 ug/ml ELISA Titer: 1:12500 Positive Control: OVCAR-3
cell lysate