



[Go to Product page](#)

Datasheet for ABIN2773950

anti-DDRGK1 antibody (N-Term)

1 Image

1 Publication

Overview

Quantity:	100 µL
Target:	DDRGK1
Binding Specificity:	N-Term
Reactivity:	Human, Cow, Dog, Horse, Rabbit
Host:	Rabbit
Clonality:	Polyclonal
Conjugate:	This DDRGK1 antibody is un-conjugated
Application:	Western Blotting (WB)

Product Details

Immunogen:	The immunogen is a synthetic peptide directed towards the N terminal region of human C20orf116
Sequence:	PLHNEELAGA GRVAQPGPLE PEEPRAGGRP RRRRDLGSRL QAQRRAQRVA
Predicted Reactivity:	Cow: 79%, Dog: 92%, Horse: 92%, Human: 100%, Rabbit: 83%
Characteristics:	This is a rabbit polyclonal antibody against C20orf116. It was validated on Western Blot using a cell lysate as a positive control.
Purification:	Affinity Purified

Target Details

Target:	DDRGK1
---------	--------

Target Details

Alternative Name:	C20orf116 (DDRKG1 Products)
Background:	The function of this protein remains unknown. Alias Symbols: MGC2592, dJ1187M17.3, UFBP1, C20orf116 Protein Interaction Partner: UBC, IMPAD1, YARS2, MTERF3, MSM01, APP, CDK5RAP3, Protein Size: 314
Molecular Weight:	35 kDa
Gene ID:	65992
NCBI Accession:	NM_023935 , NP_076424
UniProt:	Q96HY6

Application Details

Application Notes:	Optimal working dilutions should be determined experimentally by the investigator.
Comment:	Antigen size: 314 AA
Restrictions:	For Research Use only

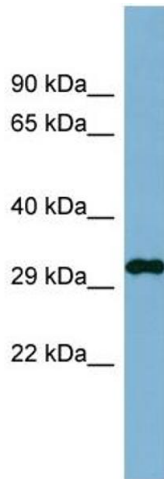
Handling

Format:	Liquid
Concentration:	Lot specific
Buffer:	Liquid. Purified antibody supplied in 1x PBS buffer with 0.09 % (w/v) sodium azide and 2 % sucrose.
Preservative:	Sodium azide
Precaution of Use:	This product contains Sodium azide: a POISONOUS AND HAZARDOUS SUBSTANCE which should be handled by trained staff only.
Handling Advice:	Avoid repeated freeze-thaw cycles.
Storage:	-20 °C
Storage Comment:	For short term use, store at 2-8°C up to 1 week. For long term storage, store at -20°C in small aliquots to prevent freeze-thaw cycles.

Publications

Product cited in: Swartz, Bor, Misawa, Rekosh, Hammarskjold: "The shuttling SR protein 9G8 plays a role in

translation of unspliced mRNA containing a constitutive transport element." in: **The Journal of biological chemistry**, Vol. 282, Issue 27, pp. 19844-53, (2007) ([PubMed](#)).



Western Blotting

Image 1. WB Suggested Anti-C20orf116 Antibody Titration:
0.2-1 ug/ml ELISA Titer: 1:62500 Positive Control: Human
Stomach