



[Go to Product page](#)

Datasheet for ABIN2773963

## anti-MRVI1 antibody (N-Term)

### 1 Image

#### Overview

Quantity:	100 µL
Target:	MRVI1
Binding Specificity:	N-Term
Reactivity:	Human, Horse, Mouse, Rabbit, Cow, Dog, Guinea Pig, Rat
Host:	Rabbit
Clonality:	Polyclonal
Conjugate:	This MRVI1 antibody is un-conjugated
Application:	Western Blotting (WB)

#### Product Details

Immunogen:	The immunogen is a synthetic peptide directed towards the N-terminal region of Human MRVI1
Sequence:	LVNDQLPDIS ISEEDKKKNL ALLEEAKLVS ERFLTRRGRK SRSSPGDSPS
Predicted Reactivity:	Cow: 100%, Dog: 100%, Guinea Pig: 100%, Horse: 100%, Human: 100%, Mouse: 100%, Rabbit: 100%, Rat: 100%
Characteristics:	This is a rabbit polyclonal antibody against MRVI1. It was validated on Western Blot.
Purification:	Affinity Purified

#### Target Details

Target:	MRVI1
Alternative Name:	MRVI1 ( <a href="#">MRVI1 Products</a> )

## Target Details

---

**Background:** This gene is similar to a putative mouse tumor suppressor gene (Mrvi1) that is frequently disrupted by mouse AIDS-related virus (MRV). The encoded protein, which is found in the membrane of the endoplasmic reticulum, is similar to Jaw1, a lymphoid-restricted protein whose expression is down-regulated during lymphoid differentiation. This protein is a substrate of cGMP-dependent kinase-1 (PKG1) that can function as a regulator of IP3-induced calcium release. Studies in mouse suggest that MRV integration at Mrvi1 induces myeloid leukemia by altering the expression of a gene important for myeloid cell growth and/or differentiation, and thus this gene may function as a myeloid leukemia tumor suppressor gene. Several alternatively spliced transcript variants encoding different isoforms have been found for this gene, and alternative translation start sites, including a non-AUG (CUG) start site, are used.

Protein Interaction Partner: MME, PRKG1, ITPR1,  
Protein Size: 803

---

**Molecular Weight:** 88 kDa

---

**Gene ID:** 10335

## Application Details

---

**Restrictions:** For Research Use only

## Handling

---

**Format:** Liquid

---

**Concentration:** 1 mg/mL

---

**Buffer:** Liquid. Purified antibody supplied in 1x PBS buffer with 0.09 % (w/v) sodium azide and 2 % sucrose.

---

**Preservative:** Sodium azide

---

**Precaution of Use:** This product contains Sodium azide: a POISONOUS AND HAZARDOUS SUBSTANCE which should be handled by trained staff only.

---

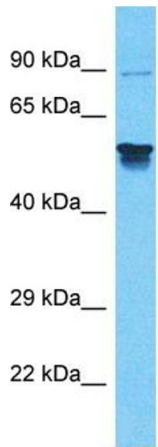
**Handling Advice:** Avoid repeat freeze-thaw cycles.

---

**Storage:** -20 °C

---

**Storage Comment:** For short term use, store at 2-8°C up to 1 week. For long term storage, store at -20°C in small aliquots to prevent freeze-thaw cycles.



Host: Rabbit  
Target Name: MRVI1  
Sample Tissue: Thymus Tumor Lysate  
Antibody Dilution: 1.0µg/ml

### Western Blotting

**Image 1.** Host: Rabbit Target Name: MRVI1 Sample  
Tissue: Human Thymus Tumor Antibody Dilution: 1ug/ml