

Datasheet for ABIN2773968
anti-SDPR antibody (N-Term)

5 Images

[Go to Product page](#)

Overview

Quantity:	100 µL
Target:	SDPR
Binding Specificity:	N-Term
Reactivity:	Human, Mouse, Rat, Cow, Goat, Guinea Pig, Horse, Pig, Rabbit
Host:	Rabbit
Clonality:	Polyclonal
Conjugate:	This SDPR antibody is un-conjugated
Application:	Western Blotting (WB), Immunohistochemistry (IHC)

Product Details

Immunogen:	The immunogen is a synthetic peptide corresponding to a region of Mouse
Sequence:	EQRQINLEGS VKGIQNDLTK LSKYQASTSN TVSKLLEKSR KVSAHTRAVR
Predicted Reactivity:	Cow: 100%, Goat: 86%, Guinea Pig: 86%, Horse: 100%, Human: 100%, Mouse: 100%, Pig: 100%, Rabbit: 100%, Rat: 100%
Characteristics:	This is a rabbit polyclonal antibody against Sdpr. It was validated on Western Blot.
Purification:	Affinity Purified

Target Details

Target:	SDPR
Alternative Name:	Sdpr (SDPR Products)

Target Details

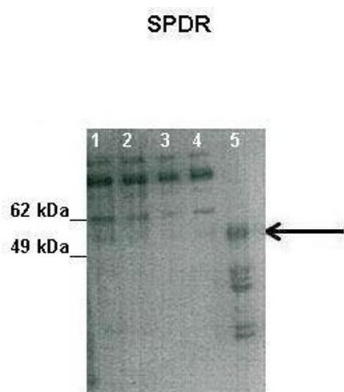
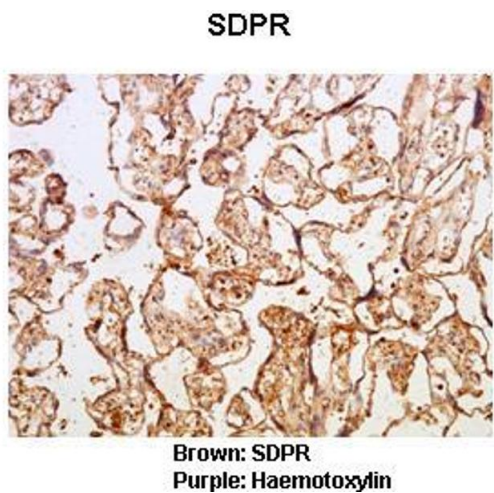
Background:	Sdpr may play a role in targeting PRKCA to caveolae By similarity. Alias Symbols: - Protein Size: 418
Molecular Weight:	47 kDa
Gene ID:	20324
NCBI Accession:	NM_138741 , NP_620080
UniProt:	Q63918

Application Details

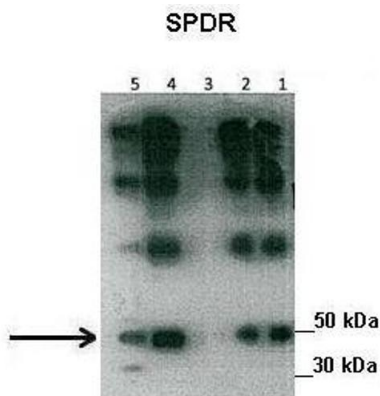
Application Notes:	Optimal working dilutions should be determined experimentally by the investigator.
Comment:	Antigen size: 418 AA
Restrictions:	For Research Use only

Handling

Format:	Liquid
Concentration:	Lot specific
Buffer:	Liquid. Purified antibody supplied in 1x PBS buffer with 0.09 % (w/v) sodium azide and 2 % sucrose.
Preservative:	Sodium azide
Precaution of Use:	This product contains Sodium azide: a POISONOUS AND HAZARDOUS SUBSTANCE which should be handled by trained staff only.
Handling Advice:	Avoid repeated freeze-thaw cycles.
Storage:	-20 °C
Storage Comment:	For short term use, store at 2-8°C up to 1 week. For long term storage, store at -20°C in small aliquots to prevent freeze-thaw cycles.



See Immunoblot 3 Data and Customer Feedback for more information



See Immunoblot 2 Data and Customer Feedback for more information

Immunohistochemistry

Image 1. Sample Type : Human placental tissue Primary Antibody Dilution : 1:50 Secondary Antibody : Goat anti rabbit-HRP Secondary Antibody Dilution : 1:10,000 Color/Signal Descriptions : Brown: SDPR Purple: Haematoxylin Gene Name : Sdpr Submitted by : Dr. Hiten D. Mistry and Anna Czajka, King's College London; Lesia Kurlak, University of Nottingham

Western Blotting

Image 2. Lanes: Lane1: 50 ug human placental tissue lysate Lane2: 40 ug human placental tissue lysate Lane3: 30 ug human placental tissue lysate Lane4: 20 ug human placental tissue lysate Lane5: 20 ug human myometrial tissue lysate Primary Antibody Dilution: 1:500 Secondary Antibody: Goat anti-rabbit HRP Secondary Antibody Dilution: 1:10000 Gene Name: SDPR Submitted by: Hiten Mistry, Ania Czajka and Marta Hentschke Ribeiro, King's College London

Western Blotting

Image 3. Lanes: Lane1: 30 ug human placental tissue lysate Lane2: 30 ug human placental tissue lysate Lane3: 30 ug human placental tissue lysate Lane4: 30 ug human placental tissue lysate Lane5: 20 ug human myometrial tissue lysate Primary Antibody Dilution: 1:500 Secondary Antibody: Goat anti-rabbit HRP Secondary Antibody Dilution: 1:10000 Gene Name: SDPR Submitted by: Hiten Mistry, Ania Czajka and Marta Hentschke Ribeiro, King's College London

Please check the [product details page](#) for more images. Overall 5 images are available for ABIN2773968.