



[Go to Product page](#)

Datasheet for ABIN2773969

## anti-NPRL2 antibody (N-Term)

2 Images

1 Publication

### Overview

Quantity:	100 µL
Target:	NPRL2
Binding Specificity:	N-Term
Reactivity:	Human, Mouse, Rat, Cow, Rabbit, Dog, Guinea Pig, Zebrafish (Danio rerio)
Host:	Rabbit
Clonality:	Polyclonal
Conjugate:	This NPRL2 antibody is un-conjugated
Application:	Western Blotting (WB), Immunohistochemistry (IHC)

### Product Details

Immunogen:	The immunogen is a synthetic peptide directed towards the N terminal region of human TUSC4
Sequence:	MSGGCRIECI FFSEFHPTLG PKITYQVPED FISRELFDTV QVYIITKPEL
Predicted Reactivity:	Cow: 100%, Dog: 100%, Guinea Pig: 100%, Human: 100%, Mouse: 100%, Rabbit: 100%, Rat: 100%, Zebrafish: 100%
Characteristics:	This is a rabbit polyclonal antibody against TUSC4. It was validated on Western Blot using a cell lysate as a positive control.
Purification:	Affinity Purified

### Target Details

Target:	NPRL2
---------	-------

## Target Details

---

Alternative Name:	TUSC4 ( <a href="#">NPRL2 Products</a> )
Background:	<p>TUSC4 suppresses Src-dependent tyrosine phosphorylation and activation of PDPK1 and its downstream signaling. TUSC4 down-regulates PDPK1 kinase activity by interfering with tyrosine phosphorylation at the Tyr-9 Tyr-373 and Tyr-376 residues. TUSC4 may act as a tumor suppressor. TUSC4 suppresses cell growth and enhanced sensitivity to various anticancer drugs.</p> <p>Alias Symbols: NPR2L, NPRL2, NPR2, TUSC4</p> <p>Protein Interaction Partner: UBC, HSP90AA1, CDKN1A, ANXA7, NPRL3, UBE2M, PRKAR1A,</p> <p>Protein Size: 380</p>
Molecular Weight:	44 kDa
Gene ID:	10641
NCBI Accession:	<a href="#">NM_006545</a> , <a href="#">NP_006536</a>
UniProt:	<a href="#">Q8WTW4</a>

## Application Details

---

Application Notes:	Optimal working dilutions should be determined experimentally by the investigator.
Comment:	Antigen size: 380 AA
Restrictions:	For Research Use only

## Handling

---

Format:	Liquid
Concentration:	Lot specific
Buffer:	Liquid. Purified antibody supplied in 1x PBS buffer with 0.09 % (w/v) sodium azide and 2 % sucrose.
Preservative:	Sodium azide
Precaution of Use:	This product contains Sodium azide: a POISONOUS AND HAZARDOUS SUBSTANCE which should be handled by trained staff only.
Handling Advice:	Avoid repeated freeze-thaw cycles.
Storage:	-20 °C
Storage Comment:	For short term use, store at 2-8°C up to 1 week. For long term storage, store at -20°C in small

aliquots to prevent freeze-thaw cycles.

## Publications

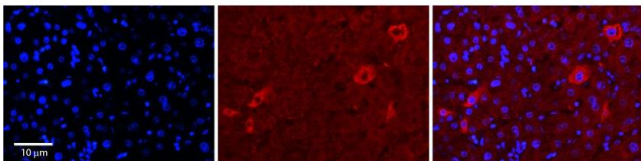
Product cited in: Ewing, Chu, Elisma, Li, Taylor, Climie, McBroom-Cerajewski, Robinson, OConnor, Li, Taylor, Dharsee, Ho, Heilbut, Moore, Zhang, Ornatsky, Bukhman, Ethier, Sheng, Vasilescu, Abu-Farha, Lambert, Duewel et al.: "Large-scale mapping of human protein-protein interactions by mass spectrometry. ..." in: **Molecular systems biology**, Vol. 3, pp. 89, (2007) ([PubMed](#)).

## Images



### Western Blotting

**Image 1.** WB Suggested Anti-TUSC4 Antibody Titration: 0.2-1 ug/ml ELISA Titer: 1:312500 Positive Control: OVCAR-3 cell lysate NPRL2 is supported by BioGPS gene expression data to be expressed in OVCAR3



### Immunohistochemistry

**Image 2.** Rabbit Anti-TUSC4 Antibody Formalin Fixed Paraffin Embedded Tissue: Human Adult Liver Observed Staining: Cytoplasm in hepatocytes, moderate signal, very low tissue distribution Primary Antibody Concentration: 1:100 Secondary Antibody: Donkey anti-Rabbit-Cy3 Secondary Antibody Concentration: 1:200 Magnification: 20X Exposure Time: 0.5 – 2.0 sec Protocol located in Reviews and Data.