



Datasheet for ABIN2773981
anti-CDR2 antibody (N-Term)



[Go to Product page](#)

3 Images

Overview

Quantity:	100 µL
Target:	CDR2
Binding Specificity:	N-Term
Reactivity:	Human, Mouse, Rat, Cow, Dog, Rabbit, Guinea Pig, Horse, Zebrafish (Danio rerio)
Host:	Rabbit
Clonality:	Polyclonal
Conjugate:	This CDR2 antibody is un-conjugated
Application:	Immunohistochemistry (IHC), Western Blotting (WB)

Product Details

Immunogen:	The immunogen is a synthetic peptide directed towards the N terminal region of human CDR2
Sequence:	MLAENLVEEF EMKEDEPWYD HQDLQQDLQL AAELGKTLTD RNTLEDSDVQ
Predicted Reactivity:	Cow: 100%, Dog: 100%, Guinea Pig: 100%, Horse: 100%, Human: 100%, Mouse: 100%, Rabbit: 100%, Rat: 100%, Zebrafish: 92%
Characteristics:	This is a rabbit polyclonal antibody against CDR2. It was validated on Western Blot and immunohistochemistry.
Purification:	Protein A purified

Target Details

Target:	CDR2
---------	------

Target Details

Alternative Name:	CDR2 (CDR2 Products)
Background:	<p>Cdr2 normally sequesters c-Myc in the neuronal cytoplasm, thereby down-regulating c-Myc activity, and suggest a mechanism whereby inhibition of cdr2 function by autoantibodies in PCD may contribute to Purkinje neuronal.</p> <p>Alias Symbols: CDR62, Yo</p> <p>Protein Interaction Partner: SMARCE1, CEP57L1, KANSL1, CCDC153, C4orf46, TXLNA, ALS2CR11, C1orf216, HAUS1, ANKRD36BP1, TCHP, FAM161A, ENKD1, FAM110A, LENG1, SCNM1, SH2D4A, LIN37, RCOR3, TBC1D22B, WDYHV1, CCHCR1, AMOTL2, FZR1, RSPH14, CHIC2, MRPL28, TMCC2, HDAC4, EIF4E2, TTR, COX5B, T</p> <p>Protein Size: 454</p>
Molecular Weight:	52 kDa
Gene ID:	1039
NCBI Accession:	NM_001802 , NP_001793
UniProt:	Q01850

Application Details

Application Notes:	Optimal working dilutions should be determined experimentally by the investigator.
Comment:	Antigen size: 454 AA
Restrictions:	For Research Use only

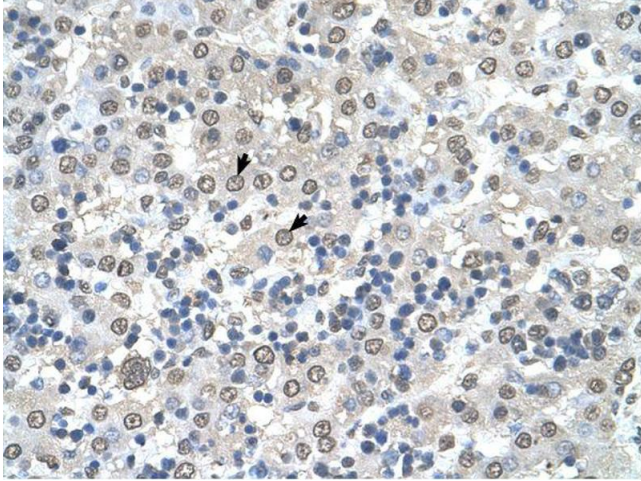
Handling

Format:	Liquid
Concentration:	Lot specific
Buffer:	Liquid. Purified antibody supplied in 1x PBS buffer with 0.09 % (w/v) sodium azide and 2 % sucrose.
Preservative:	Sodium azide
Precaution of Use:	This product contains Sodium azide: a POISONOUS AND HAZARDOUS SUBSTANCE which should be handled by trained staff only.
Handling Advice:	Avoid repeated freeze-thaw cycles.
Storage:	-20 °C

Handling

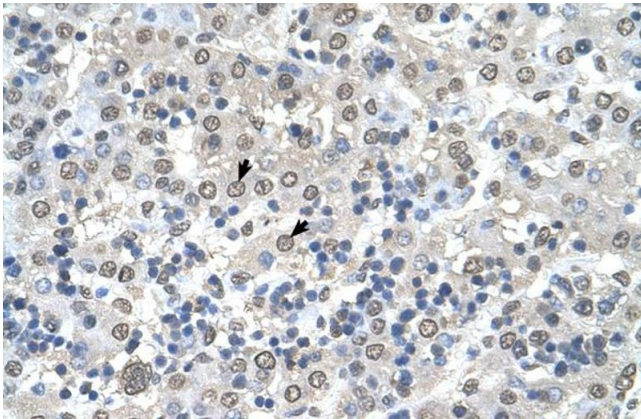
Storage Comment: For short term use, store at 2-8°C up to 1 week. For long term storage, store at -20°C in small aliquots to prevent freeze-thaw cycles.

Images



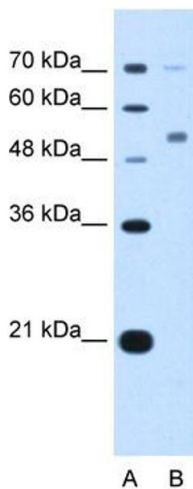
Immunohistochemistry

Image 1.



Immunohistochemistry

Image 2. Human Liver



Western Blotting

Image 3. WB Suggested Anti-CDR2 Antibody Titration: 5.0ug/ml Positive Control: HepG2 cell lysate CDR2 is supported by BioGPS gene expression data to be expressed in HepG2