

Datasheet for ABIN2773984  
**anti-FZR1 antibody (N-Term)**[Go to Product page](#)

## 2 Images

## Overview

|                      |  |
|----------------------|--|
| Quantity:            | 100 µL   |
| Target:              | FZR1   |
| Binding Specificity: | N-Term   |
| Reactivity:          | Human, Mouse, Rat, Cow, Zebrafish (Danio rerio), Dog, Guinea Pig, Horse, Pig |
| Host:                | Rabbit   |
| Clonality:           | Polyclonal   |
| Conjugate:           | This FZR1 antibody is un-conjugated  |
| Application:         | Western Blotting (WB)  |

## Product Details

|                       |   |
|-----------------------|---|
| Immunogen:            | The immunogen is a synthetic peptide corresponding to a region of Mouse                                       |
| Sequence:             | RQIIQNENT VPCVSEMRRT LTPANSPVSS PSKHGDRFIP SRAGANWSVN   |
| Predicted Reactivity: | Cow: 93%, Dog: 93%, Guinea Pig: 93%, Horse: 93%, Human: 100%, Mouse: 93%, Pig: 100%, Rat: 93%, Zebrafish: 92% |
| Characteristics:      | This is a rabbit polyclonal antibody against Fzr1. It was validated on Western Blot.                          |
| Purification:         | Affinity Purified   |

## Target Details

|                   |  |
|-------------------|--|
| Target:           | FZR1                                   |
| Alternative Name: | Fzr1 ( <a href="#">FZR1 Products</a> ) |

## Target Details

|                   |  |
|-------------------|--|
| Background:       | <p>Fzr1 is the key regulator of ligase activity of the anaphase promoting complex/cyclosome (APC/C), which confers substrate specificity upon the complex. Fzr1 associates with the APC/C in late mitosis, in replacement of CDC20, and activates the APC/C during anaphase and telophase. The APC/C remains active in degrading substrates to ensure that positive regulators of the cell cycle do not accumulate prematurely. At the G1/S transition FZR1 is phosphorylated, leading to its dissociation from the APC/C. Following DNA damage, it is required for the G2 DNA damage checkpoint: its dephosphorylation and reassociation with the APC/C leads to the ubiquitination of PLK1, preventing entry into mitosis.</p> <p>Alias Symbols: AW108046, Cdh1, FZR, FZR2, Fyr, HCDH, HCDH1</p> <p>Protein Interaction Partner: Arhgap35, Rrm2, Ccnb1, Cdc27, Sirt2, Smurf1, Skil, Ube2c, Csf3r,</p> <p>Protein Size: 493</p> |
| Molecular Weight: | 55 kDa   |
| Gene ID:          | 56371  |
| NCBI Accession:   | <a href="#">NM_019757</a> , <a href="#">NP_062731</a>  |
| UniProt:          | <a href="#">Q9R1K5</a>   |
| Pathways:         | <a href="#">DNA Replication</a> , <a href="#">Synthesis of DNA</a>   |

## Application Details

|                    |  |
|--------------------|--|
| Application Notes: | Optimal working dilutions should be determined experimentally by the investigator. |
| Comment:           | Antigen size: 493 AA   |
| Restrictions:      | For Research Use only  |

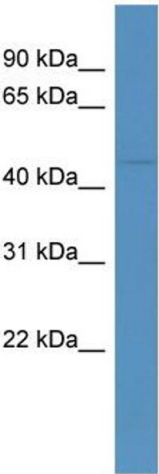
## Handling

|                    |  |
|--------------------|--|
| Format:            | Liquid   |
| Concentration:     | Lot specific   |
| Buffer:            | Liquid. Purified antibody supplied in 1x PBS buffer with 0.09 % (w/v) sodium azide and 2 % sucrose.                    |
| Preservative:      | Sodium azide   |
| Precaution of Use: | This product contains Sodium azide: a POISONOUS AND HAZARDOUS SUBSTANCE which should be handled by trained staff only. |
| Handling Advice:   | Avoid repeated freeze-thaw cycles.   |

Handling

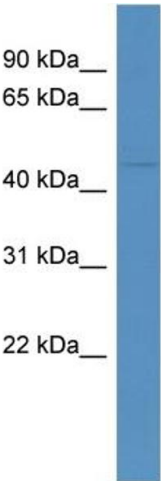
|                  |   |
|------------------|---|
| Storage:         | -20 °C  |
| Storage Comment: | For short term use, store at 2-8°C up to 1 week. For long term storage, store at -20°C in small aliquots to prevent freeze-thaw cycles. |

Images



Western Blotting

**Image 1.** WB Suggested Anti-Fzr1 Antibody Titration: 0.2-1 ug/ml ELISA Titer: 1:62500 Positive Control: Mouse Heart



Rabbit Anti-Fzr1 Antibody  
Catalog Number: ARP51278  
Lot Number: QC17447  
Lane: Mouse Heart Lysate

Antibody Titration: 1.0µg/ml  
Gel Concentration: 12%

Western Blotting

**Image 2.** WB Suggested Anti-Fzr1  
Antibody Titration: 0.2-1 µg/mL ELISA Titer: 1:2500  
Positive Control: Mouse Heart