



Datasheet for ABIN2774003
anti-CTDSP2 antibody (Middle Region)



[Go to Product page](#)

2 Images

Overview

Quantity:	100 µL
Target:	CTDSP2
Binding Specificity:	Middle Region
Reactivity:	Human, Rat, Mouse, Cow, Horse, Guinea Pig, Rabbit, Dog, Pig
Host:	Rabbit
Clonality:	Polyclonal
Conjugate:	This CTDSP2 antibody is un-conjugated
Application:	Western Blotting (WB)

Product Details

Immunogen:	The immunogen is a synthetic peptide directed towards the middle region of human CTDSP2
Sequence:	ASYIFHPENA VPVQSWFDDM ADTELLNLIP IFEELSGAED VYTSLGQLRA
Predicted Reactivity:	Cow: 100%, Dog: 100%, Guinea Pig: 93%, Horse: 100%, Human: 100%, Mouse: 86%, Pig: 100%, Rabbit: 91%, Rat: 100%
Characteristics:	This is a rabbit polyclonal antibody against CTDSP2. It was validated on Western Blot using a cell lysate as a positive control.
Purification:	Affinity Purified

Target Details

Target:	CTDSP2
---------	--------

Target Details

Alternative Name:	CTDSP2 (CTDSP2 Products)
Background:	<p>CTDSP2 preferentially catalyzes the dephosphorylation of 'Ser-5' within the tandem 7 residues repeats in the C-terminal domain (CTD) of the largest RNA polymerase II subunit POLR2A. CTDSP2 negatively regulates RNA polymerase II transcription, possibly by controlling the transition from initiation/capping to processive transcript elongation. CTDSP2 is recruited by REST to neuronal genes that contain RE-1 elements, leading to neuronal gene silencing in non-neuronal cells. CTDSP2 may contribute to the development of sarcomas.</p> <p>Alias Symbols: OS4, PSR2, SCP2</p> <p>Protein Interaction Partner: CDCA3, UBC, AR, SNAI1, POLR2A,</p> <p>Protein Size: 271</p>
Molecular Weight:	31 kDa
Gene ID:	10106
NCBI Accession:	NM_005730 , NP_005721
UniProt:	O14595
Pathways:	ER-Nucleus Signaling

Application Details

Application Notes:	Optimal working dilutions should be determined experimentally by the investigator.
Comment:	Antigen size: 271 AA
Restrictions:	For Research Use only

Handling

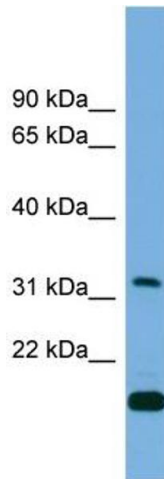
Format:	Liquid
Concentration:	Lot specific
Buffer:	Liquid. Purified antibody supplied in 1x PBS buffer with 0.09 % (w/v) sodium azide and 2 % sucrose.
Preservative:	Sodium azide
Precaution of Use:	This product contains Sodium azide: a POISONOUS AND HAZARDOUS SUBSTANCE which should be handled by trained staff only.
Handling Advice:	Avoid repeated freeze-thaw cycles.

Handling

Storage: -20 °C

Storage Comment: For short term use, store at 2-8°C up to 1 week. For long term storage, store at -20°C in small aliquots to prevent freeze-thaw cycles.

Images

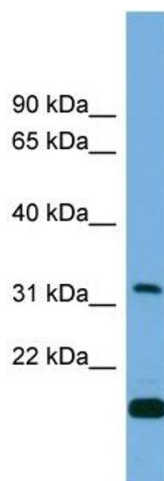


Western Blotting

Image 1. WB Suggested Anti-CTDSP2 Antibody Titration:

0.2-1 ug/ml

Positive Control: RPMI 8226 cell lysate



Western Blotting

Image 2. WB Suggested Anti-CTDSP2

Antibody Titration: 0.2-1 µg/mL

Positive Control: RPMI 8226 cell lysate. CTDSP2 is strongly supported by BioGPS gene expression data to be expressed in RPMI-8226