

Datasheet for ABIN2774010
anti-FSTL1 antibody (C-Term)[Go to Product page](#)

2 Images

Overview

Quantity:	100 µL
Target:	FSTL1
Binding Specificity:	C-Term
Reactivity:	Human, Rat, Mouse, Cow, Horse, Rabbit, Dog, Guinea Pig, Zebrafish (Danio rerio)
Host:	Rabbit
Clonality:	Polyclonal
Conjugate:	This FSTL1 antibody is un-conjugated
Application:	Western Blotting (WB), Immunohistochemistry (IHC)

Product Details

Immunogen:	The immunogen is a synthetic peptide directed towards the C terminal region of human FSTL1
Sequence:	LNPSFNPPEK KCALEDETYA DGAETEVDN RCVACGNWV CTAMTCDGKN
Predicted Reactivity:	Cow: 100%, Dog: 100%, Guinea Pig: 100%, Horse: 100%, Human: 100%, Mouse: 100%, Rabbit: 100%, Rat: 100%, Zebrafish: 86%
Characteristics:	This is a rabbit polyclonal antibody against FSTL1. It was validated on Western Blot.
Purification:	Affinity Purified

Target Details

Target:	FSTL1
Alternative Name:	FSTL1 (FSTL1 Products)

Target Details

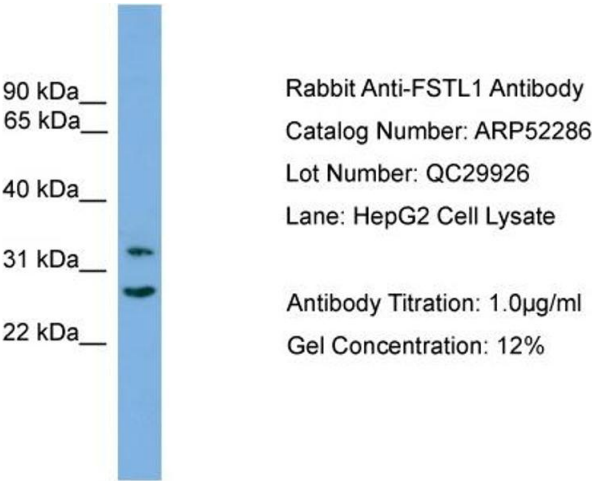
Background:	<p>This gene encodes a protein with similarity to follistatin, an activin-binding protein. It contains an FS module, a follistatin-like sequence containing 10 conserved cysteine residues. This gene product is thought to be an autoantigen associated with rheumatoid arthritis.</p> <p>Alias Symbols: FLJ50214, FLJ52277, FRP, FSL1</p> <p>Protein Interaction Partner: APPBP2,</p> <p>Protein Size: 308</p>
Molecular Weight:	33 kDa
Gene ID:	11167
NCBI Accession:	NM_007085 , NP_009016
UniProt:	Q12841

Application Details

Application Notes:	Optimal working dilutions should be determined experimentally by the investigator.
Comment:	Antigen size: 308 AA
Restrictions:	For Research Use only

Handling

Format:	Liquid
Concentration:	Lot specific
Buffer:	Liquid. Purified antibody supplied in 1x PBS buffer with 0.09 % (w/v) sodium azide and 2 % sucrose.
Preservative:	Sodium azide
Precaution of Use:	This product contains Sodium azide: a POISONOUS AND HAZARDOUS SUBSTANCE which should be handled by trained staff only.
Handling Advice:	Avoid repeated freeze-thaw cycles.
Storage:	-20 °C
Storage Comment:	For short term use, store at 2-8°C up to 1 week. For long term storage, store at -20°C in small aliquots to prevent freeze-thaw cycles.

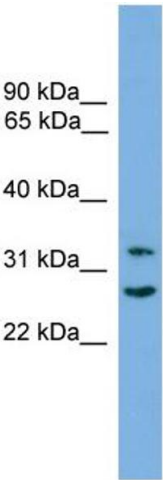


Western Blotting

Image 1. WB Suggested Anti-FSTL1

Antibody Titration: 0.2-1 µg/mL ELISA Titer: 1::2500

Positive Control: HepG2 cell lysate



Western Blotting

Image 2. WB Suggested Anti-FSTL1 Antibody Titration:

0.2-1 ug/ml

ELISA Titer: 1:62500

Positive Control: HepG2 cell lysate