

Datasheet for ABIN2774017
anti-ADC antibody (Middle Region)[Go to Product page](#)

2 Images

Overview

Quantity:	100 µL
Target:	ADC
Binding Specificity:	Middle Region
Reactivity:	Human, Mouse, Rat, Dog, Guinea Pig, Rabbit, Cow, Horse, Pig
Host:	Rabbit
Clonality:	Polyclonal
Conjugate:	This ADC antibody is un-conjugated
Application:	Western Blotting (WB)

Product Details

Immunogen:	The immunogen is a synthetic peptide directed towards the middle region of human ADC
Sequence:	RHLLENAKKH HVEVVGVSFH IGSGCPDPQA YAQSIADARL VFEMGTELGH
Predicted Reactivity:	Cow: 100%, Dog: 79%, Guinea Pig: 86%, Horse: 100%, Human: 100%, Mouse: 100%, Pig: 100%, Rabbit: 93%, Rat: 100%
Characteristics:	This is a rabbit polyclonal antibody against ADC. It was validated on Western Blot using a cell lysate as a positive control.
Purification:	Affinity Purified

Target Details

Target:	ADC
---------	-----

Target Details

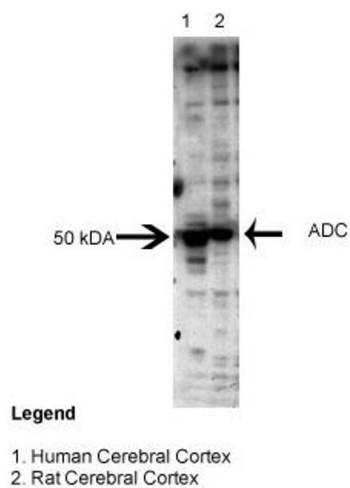
Alternative Name:	ADC (ADC Products)
Background:	ADC decarboxylates L-arginine to agmatine. Truncated splice isoforms probably lack activity. Alias Symbols: AZI2, KIAA1945, ODC-p, ODC1L Protein Interaction Partner: OAZ3, Protein Size: 460
Molecular Weight:	50 kDa
Gene ID:	113451
NCBI Accession:	NM_052998 , NP_443724
UniProt:	Q96A70

Application Details

Application Notes:	Optimal working dilutions should be determined experimentally by the investigator.
Comment:	Antigen size: 460 AA
Restrictions:	For Research Use only

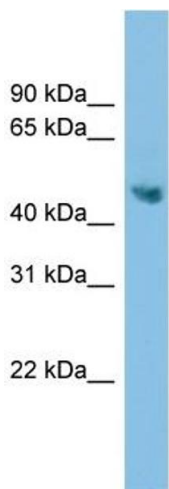
Handling

Format:	Liquid
Concentration:	Lot specific
Buffer:	Liquid. Purified antibody supplied in 1x PBS buffer with 0.09 % (w/v) sodium azide and 2 % sucrose.
Preservative:	Sodium azide
Precaution of Use:	This product contains Sodium azide: a POISONOUS AND HAZARDOUS SUBSTANCE which should be handled by trained staff only.
Handling Advice:	Avoid repeated freeze-thaw cycles.
Storage:	-20 °C
Storage Comment:	For short term use, store at 2-8°C up to 1 week. For long term storage, store at -20°C in small aliquots to prevent freeze-thaw cycles.



Western Blotting

Image 1. Sample Type: Human and Rat Cerebral Cortex Primary Dilution: 1:3000



Western Blotting

Image 2. WB Suggested Anti-ADC Antibody Titration: 0.2-1 ug/ml ELISA Titer: 1:12500 Positive Control: COLO205 cell lysate