

Datasheet for ABIN2774023

anti-RHEBL1 antibody (Middle Region)[Go to Product page](#)**1** Image

Overview

Quantity:	100 µL
Target:	RHEBL1
Binding Specificity:	Middle Region
Reactivity:	Human, Mouse, Guinea Pig, Horse, Rabbit, Rat, Cow, Dog, Pig
Host:	Rabbit
Clonality:	Polyclonal
Conjugate:	This RHEBL1 antibody is un-conjugated
Application:	Western Blotting (WB)

Product Details

Immunogen:	The immunogen is a synthetic peptide directed towards the middle region of human RHEBL1
Sequence:	TRVPVVLVGN KADLSPEREV QAVEGKKLAE SWGATFMESS ARENQLTQGI
Predicted Reactivity:	Cow: 93%, Dog: 93%, Guinea Pig: 79%, Horse: 86%, Human: 100%, Mouse: 100%, Pig: 93%, Rabbit: 93%, Rat: 86%
Characteristics:	This is a rabbit polyclonal antibody against RHEBL1. It was validated on Western Blot using a cell lysate as a positive control.
Purification:	Affinity Purified

Target Details

Target:	RHEBL1
---------	--------

Target Details

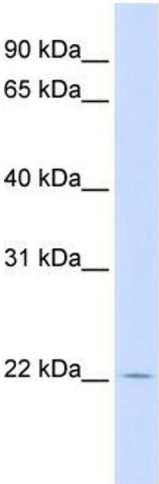
Alternative Name:	RHEBL1 (RHEBL1 Products)
Background:	<p>RHEBL1 binds GTP and exhibits intrinsic GTPase activity. It may activate NF-kappa-B-mediated gene transcription. RHEBL1 promotes signal transduction through FRAP1, activates RPS6KB1, and is a downstream target of the small GTPase-activating proteins TSC1 and TSC2.</p> <p>Alias Symbols: FLJ25797, MGC34869, RHEBL1c</p> <p>Protein Interaction Partner: APPL1, PRKAB2, MTOR, FHL3, TXNL4A, Blzf1, Traf2, BMPR1B, EIF4EBP1, SMAD1, SMAD2, SMAD4, TGFBR1, AKT1, ACVR1,</p> <p>Protein Size: 183</p>
Molecular Weight:	21 kDa
Gene ID:	121268
NCBI Accession:	NM_144593 , NP_653194
UniProt:	Q8TAI7

Application Details

Application Notes:	Optimal working dilutions should be determined experimentally by the investigator.
Comment:	Antigen size: 183 AA
Restrictions:	For Research Use only

Handling

Format:	Liquid
Concentration:	Lot specific
Buffer:	Liquid. Purified antibody supplied in 1x PBS buffer with 0.09 % (w/v) sodium azide and 2 % sucrose.
Preservative:	Sodium azide
Precaution of Use:	This product contains Sodium azide: a POISONOUS AND HAZARDOUS SUBSTANCE which should be handled by trained staff only.
Handling Advice:	Avoid repeated freeze-thaw cycles.
Storage:	-20 °C
Storage Comment:	For short term use, store at 2-8°C up to 1 week. For long term storage, store at -20°C in small aliquots to prevent freeze-thaw cycles.



Western Blotting

Image 1. WB Suggested Anti-RHEBL1 Antibody Titration:
0.2-1 ug/ml
ELISA Titer: 1:312500
Positive Control: Human Muscle