

Datasheet for ABIN2774026
anti-SPICE1 antibody (Middle Region)[Go to Product page](#)

2 Images

Overview

Quantity:	100 µL
Target:	SPICE1
Binding Specificity:	Middle Region
Reactivity:	Human, Mouse, Rat, Rabbit, Cow, Dog, Horse, Guinea Pig
Host:	Rabbit
Clonality:	Polyclonal
Conjugate:	This SPICE1 antibody is un-conjugated
Application:	Western Blotting (WB)

Product Details

Immunogen:	The immunogen is a synthetic peptide directed towards the middle region of human CCDC52
Sequence:	KEQNWEEKTL PIDTDIQNSS EENRLFTQRW RVSHMGEDLE NKTQAPFVNL
Predicted Reactivity:	Cow: 79%, Dog: 79%, Guinea Pig: 93%, Horse: 92%, Human: 100%, Mouse: 100%, Rabbit: 93%, Rat: 93%
Characteristics:	This is a rabbit polyclonal antibody against CCDC52. It was validated on Western Blot using a cell lysate as a positive control.
Purification:	Affinity Purified

Target Details

Target:	SPICE1
---------	--------

Target Details

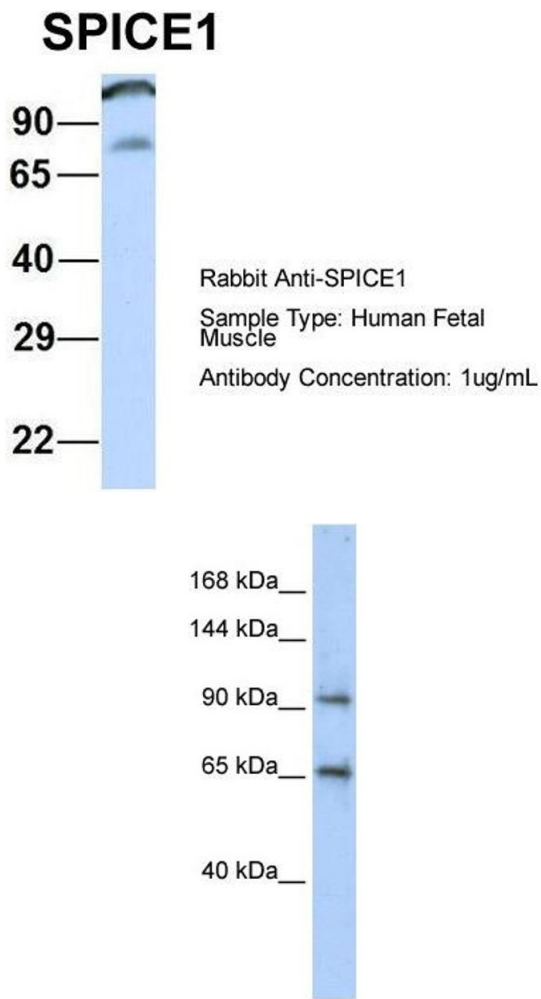
Alternative Name:	CCDC52 (SPICE1 Products)
Background:	<p>The specific function of CCDC52 is not yet known.</p> <p>Alias Symbols: FLJ26064, FLJ44949, SPICE, CCDC52</p> <p>Protein Interaction Partner: CEP250, KDM1A, AMOT, LATS2, GSK3B, GSK3A, UBC, Cep120, ESRRA,</p> <p>Protein Size: 855</p>
Molecular Weight:	96 kDa
Gene ID:	152185
NCBI Accession:	NM_144718 , NP_653319
UniProt:	Q8N0Z3

Application Details

Application Notes:	Optimal working dilutions should be determined experimentally by the investigator.
Comment:	Antigen size: 855 AA
Restrictions:	For Research Use only

Handling

Format:	Liquid
Concentration:	Lot specific
Buffer:	Liquid. Purified antibody supplied in 1x PBS buffer with 0.09 % (w/v) sodium azide and 2 % sucrose.
Preservative:	Sodium azide
Precaution of Use:	This product contains Sodium azide: a POISONOUS AND HAZARDOUS SUBSTANCE which should be handled by trained staff only.
Handling Advice:	Avoid repeated freeze-thaw cycles.
Storage:	-20 °C
Storage Comment:	For short term use, store at 2-8°C up to 1 week. For long term storage, store at -20°C in small aliquots to prevent freeze-thaw cycles.



Western Blotting

Image 1. Host: Rabbit
Target Name: SPICE1
Sample Tissue: Human Fetal Muscle
Antibody Dilution: 1.0 µg/mL

Western Blotting

Image 2. WB Suggested Anti-CCDC52 Antibody Titration:
0.2-1 ug/ml
ELISA Titer: 1:312500
Positive Control: Transfected 293T