



[Go to Product page](#)

Datasheet for ABIN2774029

anti-SLC25A48 antibody (C-Term)

1 Image

Overview

Quantity:	100 µL
Target:	SLC25A48
Binding Specificity:	C-Term
Reactivity:	Human
Host:	Rabbit
Clonality:	Polyclonal
Conjugate:	This SLC25A48 antibody is un-conjugated
Application:	Western Blotting (WB)

Product Details

Immunogen:	The immunogen is a synthetic peptide directed towards the c terminal region of human LOC153328
Sequence:	TAVGQLGNCH ALLSPGGGQD TFRYSPNNSL LGTYSVPGPL PPQSHPFPMQ
Predicted Reactivity:	Human: 100%
Characteristics:	This is a rabbit polyclonal antibody against LOC153328. It was validated on Western Blot.
Purification:	Affinity Purified

Target Details

Target:	SLC25A48
Alternative Name:	SLC25A48 (SLC25A48 Products)

Target Details

Background: The function of this protein remains unknown.
Alias Symbols: HDMCP
Protein Interaction Partner: KRTAP10-3, KRTAP10-7, UBASH3B, MID2, PNMA1, TRAF1,
Protein Size: 291

Molecular Weight: 31 kDa

Gene ID: 153328

NCBI Accession: [NM_145282](#)

Application Details

Application Notes: Optimal working dilutions should be determined experimentally by the investigator.

Comment: Antigen size: 291 AA

Restrictions: For Research Use only

Handling

Format: Liquid

Concentration: Lot specific

Buffer: Liquid. Purified antibody supplied in 1x PBS buffer with 0.09 % (w/v) sodium azide and 2 % sucrose.

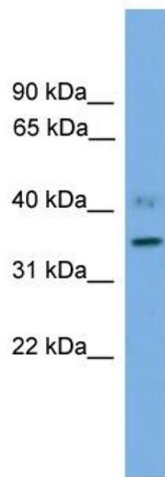
Preservative: Sodium azide

Precaution of Use: This product contains Sodium azide: a POISONOUS AND HAZARDOUS SUBSTANCE which should be handled by trained staff only.

Handling Advice: Avoid repeated freeze-thaw cycles.

Storage: -20 °C

Storage Comment: For short term use, store at 2-8°C up to 1 week. For long term storage, store at -20°C in small aliquots to prevent freeze-thaw cycles.



Western Blotting

Image 1. WB Suggested Anti-SLC25A48 Antibody Titration:
0.2-1 ug/ml ELISA Titer: 1:1562500 Positive Control:
Human Muscle