



[Go to Product page](#)

Datasheet for ABIN2774035
anti-C4ORF23 antibody (N-Term)

1 Image

Overview

Quantity:	100 µL
Target:	C4ORF23 (METTL19)
Binding Specificity:	N-Term
Reactivity:	Human, Rat, Cow, Dog, Guinea Pig, Horse, Mouse, Rabbit
Host:	Rabbit
Clonality:	Polyclonal
Conjugate:	This C4ORF23 antibody is un-conjugated
Application:	Western Blotting (WB)

Product Details

Immunogen:	The immunogen is a synthetic peptide directed towards the N terminal region of human C4orf23
Sequence:	LTPWIPVIAA RSSYNCRFFV LPCCFFDFIG RYSRRQSKKT QYREYLDFIK
Predicted Reactivity:	Cow: 85%, Dog: 93%, Guinea Pig: 93%, Horse: 93%, Human: 100%, Mouse: 92%, Rabbit: 93%, Rat: 100%
Characteristics:	This is a rabbit polyclonal antibody against C4orf23. It was validated on Western Blot using a cell lysate as a positive control.
Purification:	Affinity Purified

Target Details

Target:	C4ORF23 (METTL19)
---------	-------------------

Target Details

Alternative Name: C4orf23 ([METTL19 Products](#))

Background: The specific function of this protein remains unknown.
Alias Symbols: FLJ12891, FLJ35725, C4orf23
Protein Interaction Partner: UBC,
Protein Size: 365

Molecular Weight: 41 kDa

Gene ID: 152992

NCBI Accession: [NM_152544](#), [NP_689757](#)

UniProt: [Q8NA95](#)

Application Details

Application Notes: Optimal working dilutions should be determined experimentally by the investigator.

Comment: Antigen size: 365 AA

Restrictions: For Research Use only

Handling

Format: Liquid

Concentration: Lot specific

Buffer: Liquid. Purified antibody supplied in 1x PBS buffer with 0.09 % (w/v) sodium azide and 2 % sucrose.

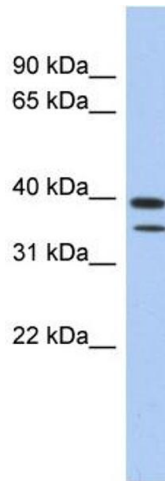
Preservative: Sodium azide

Precaution of Use: This product contains Sodium azide: a POISONOUS AND HAZARDOUS SUBSTANCE which should be handled by trained staff only.

Handling Advice: Avoid repeated freeze-thaw cycles.

Storage: -20 °C

Storage Comment: For short term use, store at 2-8°C up to 1 week. For long term storage, store at -20°C in small aliquots to prevent freeze-thaw cycles.



Western Blotting

Image 1. WB Suggested Anti-C4orf23 Antibody Titration:

0.2-1 ug/ml

ELISA Titer: 1:312500

Positive Control: Human Spleen