

Datasheet for ABIN2774040  
**anti-CAMKK2 antibody (N-Term)**

## 3 Images

[Go to Product page](#)

## Overview

Quantity:	100 µL
Target:	CAMKK2
Binding Specificity:	N-Term
Reactivity:	Human, Mouse, Rat, Pig, Guinea Pig, Rabbit, Cow, Dog, Zebrafish (Danio rerio)
Host:	Rabbit
Clonality:	Polyclonal
Conjugate:	This CAMKK2 antibody is un-conjugated
Application:	Western Blotting (WB)

## Product Details

Immunogen:	The immunogen is a synthetic peptide directed towards the N terminal region of human CAMKK2
Sequence:	GGLAAGGSLD MNGRCICPSL PYSPVSSPQS SPRLPRRPTV ESHHVSITGM
Predicted Reactivity:	Cow: 93%, Dog: 93%, Guinea Pig: 86%, Human: 100%, Mouse: 86%, Pig: 93%, Rabbit: 93%, Rat: 86%, Zebrafish: 79%
Characteristics:	This is a rabbit polyclonal antibody against CAMKK2. It was validated on Western Blot using a cell lysate as a positive control.
Purification:	Affinity Purified

## Target Details

Target:	CAMKK2
---------	--------

## Target Details

Alternative Name:	CAMKK2 ( <a href="#">CAMKK2 Products</a> )
Background:	<p>CAMKK2 is a calcium/calmodulin-dependent protein kinase belonging to a proposed calcium-triggered signaling cascade involved in a number of cellular processes. Isoform 1, isoform 2 and isoform 3 phosphorylate CAMK1 and CAMK4. Isoform 3 phosphorylates CAMK1D. Isoform 4, isoform 5 and isoform 6 lacking part of the calmodulin-binding domain are inactive. CAMKK2 seems to be involved in hippocampal activation of CREB1. The product of this gene belongs to the Serine/Threonine protein kinase family, and to the Ca(2+)/calmodulin-dependent protein kinase subfamily. This protein plays a role in the calcium/calmodulin-dependent (CaM) kinase cascade by phosphorylating the downstream kinases CaMK1 and CaMK4. Seven transcript variants encoding six distinct isoforms have been identified for this gene. Additional splice variants have been described but their full-length nature has not been determined. The identified isoforms exhibit a distinct ability to undergo autophosphorylation and to phosphorylate the downstream kinases.</p> <p>Alias Symbols: CAMKK, CAMKKB, KIAA0787, MGC15254</p> <p>Protein Interaction Partner: HSP90AA1, APP, UBC, NEDD4, CEP63, ESYT2, FANCI, OBSL1, ATG4B, XPOT, GCN1L1, IQGAP2, SMC3, SLC25A11, SMC1A, PRKDC, PRKAG1, PRKAA2, IRAK1, FLNC, FLNA, MAPK14, CALM1, CAMK4, CAMK1, PRKACA, SGK1,</p> <p>Protein Size: 498</p>
Molecular Weight:	55 kDa
Gene ID:	10645
NCBI Accession:	<a href="#">NM_153500</a> , <a href="#">NP_705720</a>
UniProt:	<a href="#">Q96RR4</a>
Pathways:	<a href="#">AMPK Signaling</a>

## Application Details

Application Notes:	Optimal working dilutions should be determined experimentally by the investigator.
Comment:	Antigen size: 498 AA
Restrictions:	For Research Use only

## Handling

Format:	Liquid
Concentration:	Lot specific

## Handling

Buffer:	Liquid. Purified antibody supplied in 1x PBS buffer with 0.09 % (w/v) sodium azide and 2 % sucrose.
Preservative:	Sodium azide
Precaution of Use:	This product contains Sodium azide: a POISONOUS AND HAZARDOUS SUBSTANCE which should be handled by trained staff only.
Handling Advice:	Avoid repeated freeze-thaw cycles.
Storage:	-20 °C
Storage Comment:	For short term use, store at 2-8°C up to 1 week. For long term storage, store at -20°C in small aliquots to prevent freeze-thaw cycles.

## Images



### Western Blotting

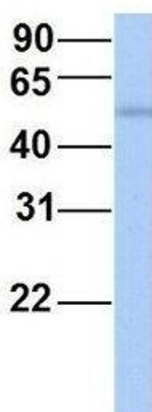
#### Image 1. WB Suggested Anti-CAMKK2 Antibody Titration:

0.2-1 ug/ml

**ELISA Titer:** 1:62500

**Positive Control:** 721\_B cell lysate

## CAMKK2



Rabbit Anti-CAMKK2

Sample Type: Human Fetal Liver

Antibody Concentration: 1ug/mL

### Western Blotting

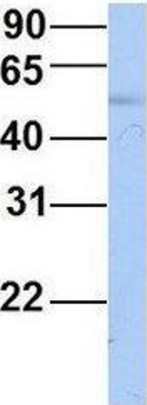
**Image 2.** Host: Rabbit

Target Name: CAMKK2

Sample Tissue: Human Fetal Liver

Antibody Dilution: 1.0 µg/mL

# CAMKK2



Rabbit Anti-CAMKK2  
Sample Type: Human Adult Placenta  
Antibody Concentration: 1ug/mL

## Western Blotting

**Image 3.** Host: Rabbit  
Target Name: CAMKK2  
Sample Tissue: Human Adult Placenta  
Antibody Dilution: 1.0 µg/mL