



[Go to Product page](#)

Datasheet for ABIN2774045

anti-SYT9 antibody (Middle Region)

3 Images

Overview

Quantity:	100 µL
Target:	SYT9
Binding Specificity:	Middle Region
Reactivity:	Human, Mouse, Rat, Rabbit, Cow, Guinea Pig, Pig, Horse, Dog
Host:	Rabbit
Clonality:	Polyclonal
Conjugate:	This SYT9 antibody is un-conjugated
Application:	Western Blotting (WB), Immunohistochemistry (IHC)

Product Details

Immunogen:	The immunogen is a synthetic peptide directed towards the middle region of human SYT9
Sequence:	PDFNIQQLQK QEQLTGIGRI KPELYQRSL DNDDGRRSNS KACGKLNFIL
Predicted Reactivity:	Cow: 100%, Dog: 79%, Guinea Pig: 86%, Horse: 100%, Human: 100%, Mouse: 100%, Pig: 93%, Rabbit: 100%, Rat: 100%
Characteristics:	This is a rabbit polyclonal antibody against SYT9. It was validated on Western Blot using a cell lysate as a positive control.
Purification:	Affinity Purified

Target Details

Target:	SYT9
---------	------

Target Details

Alternative Name:	SYT9 (SYT9 Products)
Background:	<p>SYT9 may be involved in Ca²⁺-dependent exocytosis of secretory vesicles through Ca²⁺ and phospholipid binding to the C2 domain or may serve as Ca²⁺ sensors in the process of vesicular trafficking and exocytosis.</p> <p>Alias Symbols: FLJ45896</p> <p>Protein Interaction Partner: NRXN1, SYT9, SYNCRIP, TRPV1, CSNK1A1, SNAP25, TUBB,</p> <p>Protein Size: 491</p>
Molecular Weight:	56 kDa
Gene ID:	143425
NCBI Accession:	NM_175733 , NP_783860
UniProt:	Q86SS6

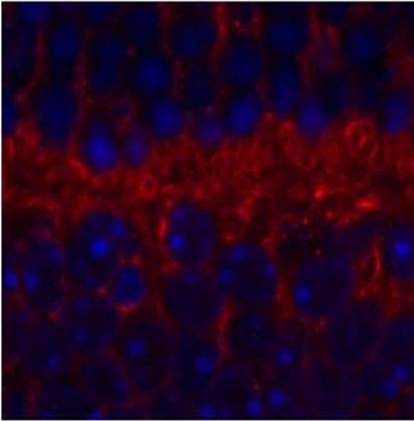
Application Details

Application Notes:	Optimal working dilutions should be determined experimentally by the investigator.
Comment:	Antigen size: 491 AA
Restrictions:	For Research Use only

Handling

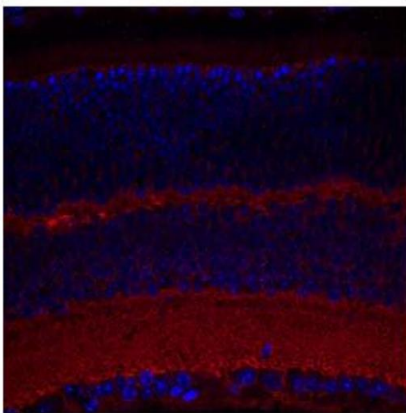
Format:	Liquid
Concentration:	Lot specific
Buffer:	Liquid. Purified antibody supplied in 1x PBS buffer with 0.09 % (w/v) sodium azide and 2 % sucrose.
Preservative:	Sodium azide
Precaution of Use:	This product contains Sodium azide: a POISONOUS AND HAZARDOUS SUBSTANCE which should be handled by trained staff only.
Handling Advice:	Avoid repeated freeze-thaw cycles.
Storage:	-20 °C
Storage Comment:	For short term use, store at 2-8°C up to 1 week. For long term storage, store at -20°C in small aliquots to prevent freeze-thaw cycles.

SYT9

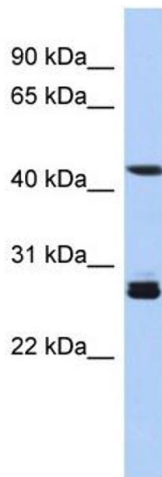


See Immunohistochemistry 2 Data for more information.

SYT9



See Immunohistochemistry 1 Data for more information.



Immunohistochemistry

Image 1. Sample Type: outer mouse plexiform layer

Red: Primary

Blue: DAPI

Primary Dilution: 1:200

Secondary Antibody: Goat anti-Rabbit AF568 IgG(H+L)

Secondary Dilution: 1:200

Image Submitted by: David Zenisek

Yale University

Immunohistochemistry

Image 2. Sample Type: complete mouse retina sections

Red: Primary

Blue: DAPI

Primary Dilution: 1:200

Secondary Antibody: Goat anti-Rabbit AF568 IgG(H+L)

Secondary Dilution: 1:200

Image Submitted by: David Zenisek

Yale University

Western Blotting

Image 3. WB Suggested Anti-SYT9 Antibody Titration: 0.2-1 ug/ml

ELISA Titer: 1:62500

Positive Control: Human Muscle